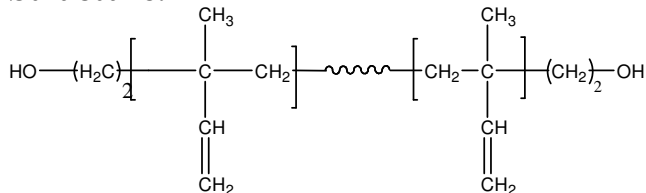


Sample Name:  
 **$\alpha,\omega$ -dihydroxy Terminated PolyIsoprene**

**(1,2 rich microstructure)**

Sample #: P9336-IP2OH

**Structure:**



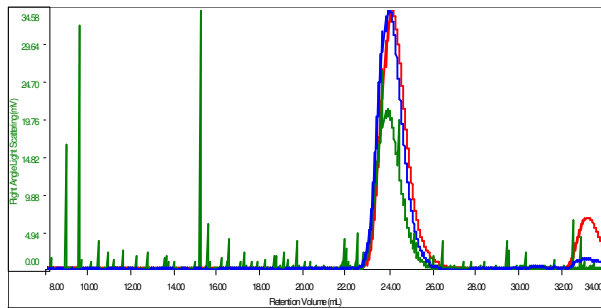
**Composition:**

$M_n \times 10^3$	PDI
16.0	1.12
Functionality	>1.98
1,2 : 2,3 + 3,4	20:80

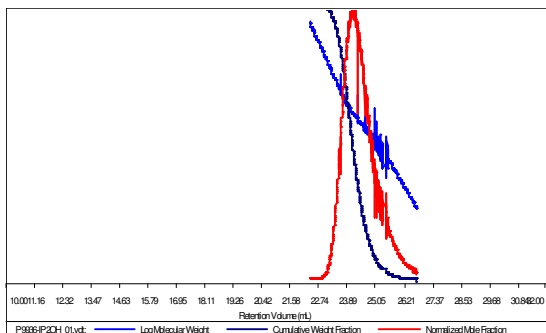
**SEC:**

**Sample ID: P9336-IP2OH**

Concentration (mg/mL)	0.8932
Sample dn/dc (mL/g)	0.1250
Method File	PS30K_July11-2014-0000.vcm
Column Set	3x PL 1113-6300
Solvent	THF



Sample	Mn	Mw	Mp	Mw/Mn	IV
P9336-IP2OH.01.vct	15,860	18,208	18,512	1.149	1.3238



**H NMR:**

