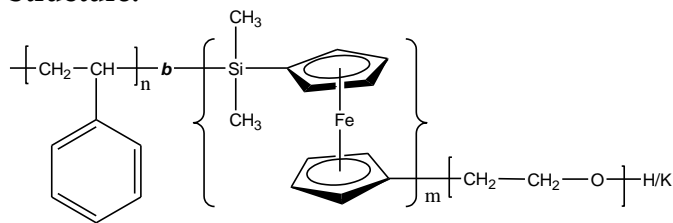


Sample Name:

Poly(styrene-*b*-ferrocenyldimethylsilane-*b*-Ethylene oxide)

Sample #: P9527-SFESEO

Structure:**Composition:**

Mn × 10 ³ S- <i>b</i> -FES- <i>b</i> -EO	Mw/Mn (PDI)
17.0- <i>b</i> -2.0- <i>b</i> -10.0	1.20

Synthesis Procedure:

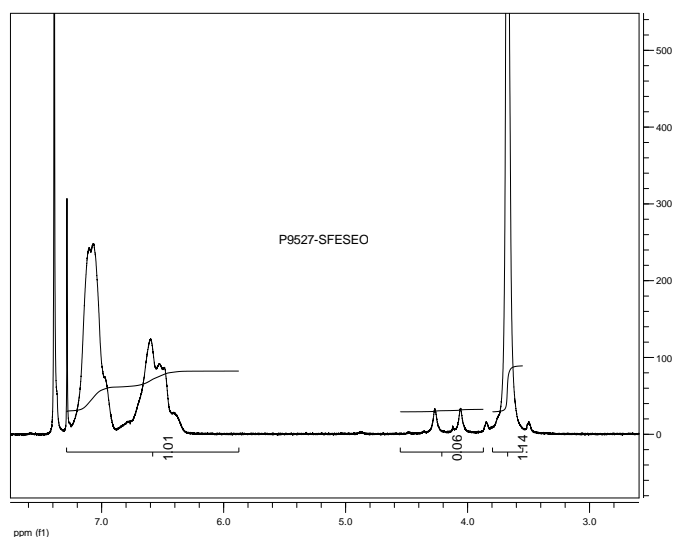
Poly(styrene-*b*- ferrocenyldimethylsilane-Ethylene oxide) is prepared by anionic living polymerization by successive addition of styrene followed by the addition of ferrocenyldimethylsilane monomer than EO.

Process under publication**Characterization:**

An aliquot of the polystyrene block was terminated before addition of hexamethyl cyclotrisiloxane and analyzed by size exclusion chromatography (SEC) to obtain the molecular weight and polydispersity index (PDI). The final block copolymer composition was calculated from ¹H-NMR spectroscopy by comparing the peak area of the styrene protons at 6.3-7.2 ppm with the peak area of Si(CH₃) at 0.2ppm.

Solubility:

Polymer is soluble in THF, CHCl₃, toluene and precipitate out from ether and hexanes.

¹H NMR spectrum of the sample:

Thermal analysis of the P9527 SFESEO

Thermal analysis of the samples was carried out on a TA Q100 differential scanning calorimeter at a heating rate of 10°C/min. The midpoint of the slope change of the heat flow plot of the second heating scan was considered as the glass transition temperature (T_g).

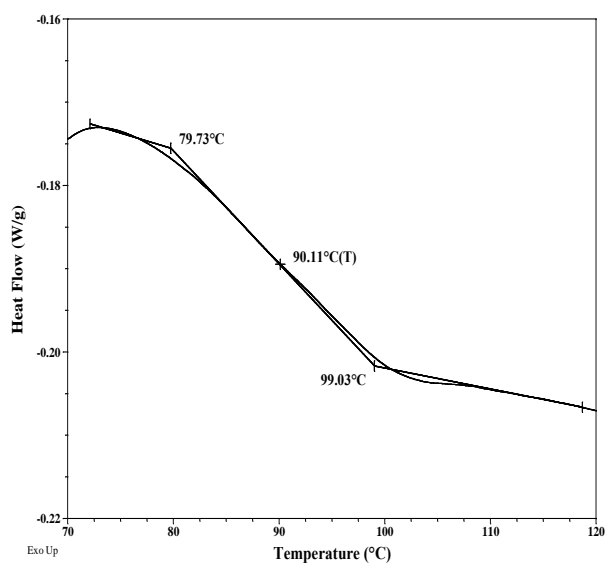
Melting and crystallization curve for the sample

The melting temperature (T_m) was taken as the maximum of the endothermic peak where as the crystallization temperature (T_c) was considered as the minimum of the exothermic peak.

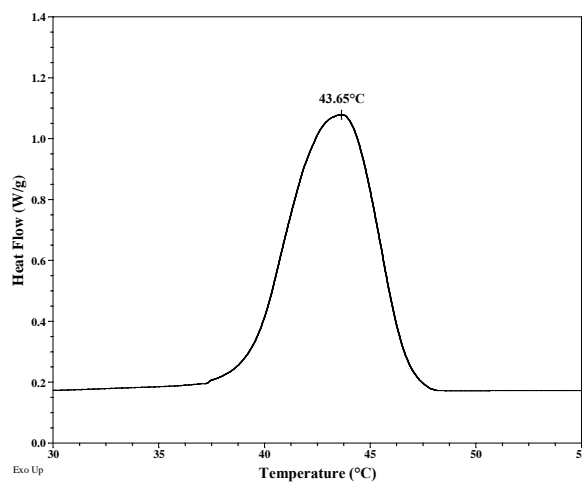
Typical thermal analysis results at a glance:

Sample	T_m (°C)	T_c (°C)	T_g (°C)
PSFE	-	-	-
PEO	63	44	-
PS			90

Thermogram for PS block



Crystallization curve for EO block:



Melting curve for EO block:

