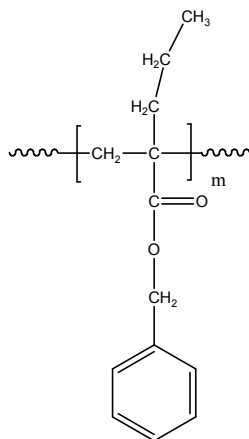


Sample Name: Poly(Benzyl  $\alpha$ -propyl  
acrylate)  
Sample #: P9546- BzPrA

**Structure:**



**Composition:**

$M_n \times 10^3$	PDI
30	1.15
$T_g$ ( $^{\circ}\text{C}$ )	66

**Characterization:**

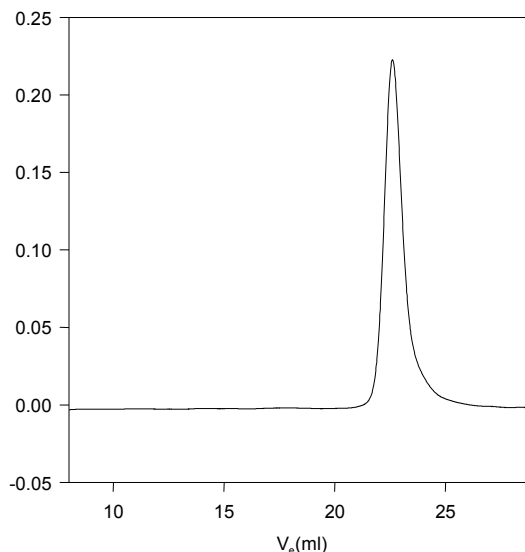
The molecular weight and polydispersity index (PDI) are obtained by size exclusion chromatography. Thermal analysis of the sample was carried out using a differential scanning calorimeter (TA Q100) at a heating rate of  $10^{\circ}\text{C}/\text{min}$ . The inflection glass transition temperature ( $T_g$ ) has been considered.

**Solubility:**

Poly(Benzyl  $\alpha$ -propyl acrylate) is soluble in THF,  $\text{CHCl}_3$  and toluene, and can be precipitated from cold ethanol and methanol.

**SEC of sample:**

P9546-BzPrA



Size exclusion chromatography of Poly(alpha-propyl Benzyl acrylate)  
 $M_n = 30,000$ ;  $M_w = 34500$ ;  $PI = 1.15$

**DSC Thermogram for the polymer**

