

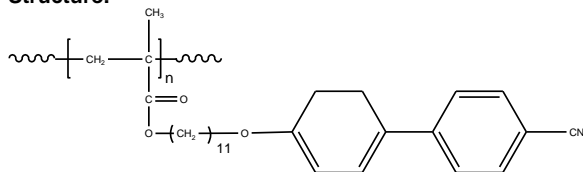
Sample Name:

Poly[6-[4-(4-cyanophenyl)phenoxy] undecyl methacrylate] or

Poly(6-(4'-cynaobiphenyl-4-yloxy) undecyl methacrylate)

Sample #: P10838-4CNBP-11LCMA

Structure:



Composition:

Mn x 10 ³	PDI
12.0	1.3
Microstructure Iso:hetero:syndio	11:37:50

Synthesis Procedure:

Poly(6-(4'-cynaobiphenyl-4-yloxy) undecyl methacrylate) is obtained by living anionic polymerization or RAFT or by cotrolled radical process of the monomer.

Characterization:

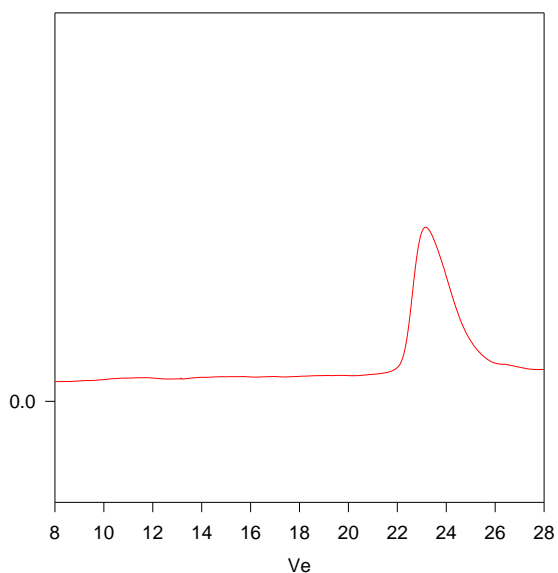
The molecular weight and polydispersity index (PDI) of Poly(6-(4'-cynaobiphenyl-4-yloxy) undecyll methacrylate) are obtained by size exclusion chromatography.

Solubility:

Poly(6-(4'-cynaobiphenyl-4-yloxy) undecyll methacrylate) is soluble in THF, acetone, dichloromethane and chloroform but insoluble in hexane, ethanol and water.

SEC of Homopolymer:

P10838-4CNBP-11LCMA



Size Exclusion Chromatography of:

Poly[6-[4-(4-cyanophenyl)phenoxy]undecyl methacrylate]

M_w = 12,000, M_w/M_n = 1.3