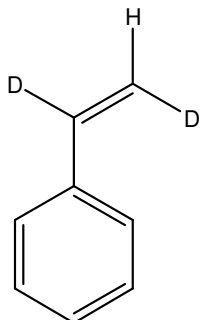


Sample Name: *trans*-Styrene- $\alpha$ ,  $\beta$ -d<sub>2</sub>

Sample #:  $\alpha$ ,  $\beta$ -d<sub>2</sub>S

Lot# P14676-1

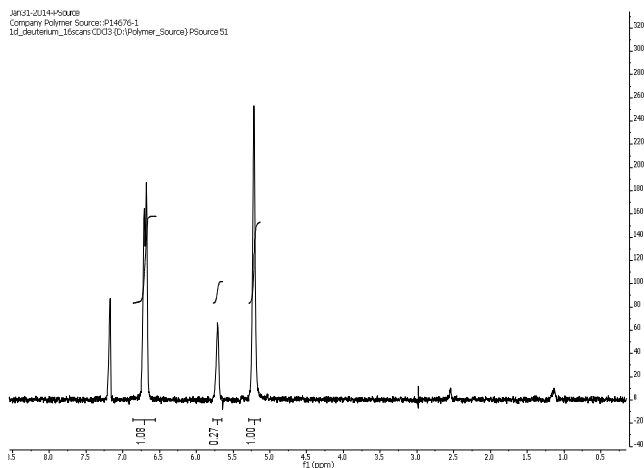
### Structure:



$C_8H_6D_2$   
Mol. Wt.: 106.16

CAS: [52751-12-9](#)

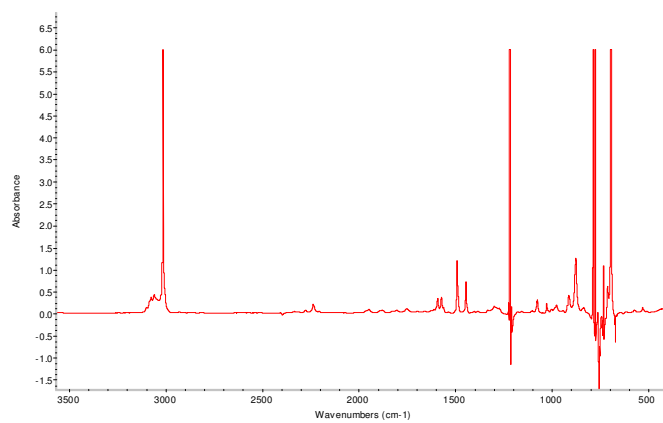
### <sup>2</sup>D NMR of P14676-1



### Characterization:

CAS	52751-12-9
Chemical Purity	> 95%
D atom purity	> 90%
Trans structure	~ 80%
Cis structure	~ 20 %

### FTIR of P14676-1



### <sup>1</sup>H NMR of P14676-1

