

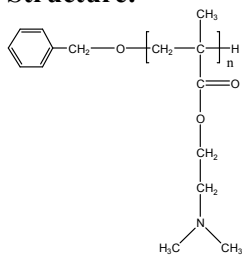
Sample Name:

Poly (N,N-dimethylaminoethyl methacrylate)

Sample #: P16043-DMAEMA

By controlled process

Structure:



Composition:

$M_n \times 10^3$	PDI
186.0	2.00

Synthesis Procedure:

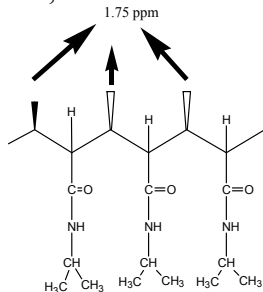
Poly (N,N-dimethyl aminoethyl methacrylate) is obtained by anionic or free radical or by GTP process.

Characterization:

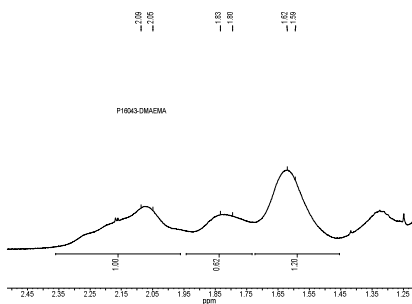
The molecular weight and polydispersity index (PDI) are obtained by size exclusion chromatography (SEC) in DMF and HNMR.

Solubility:

Poly (N,N-dimethylaminoethyl methacrylate) is soluble water, methanol.



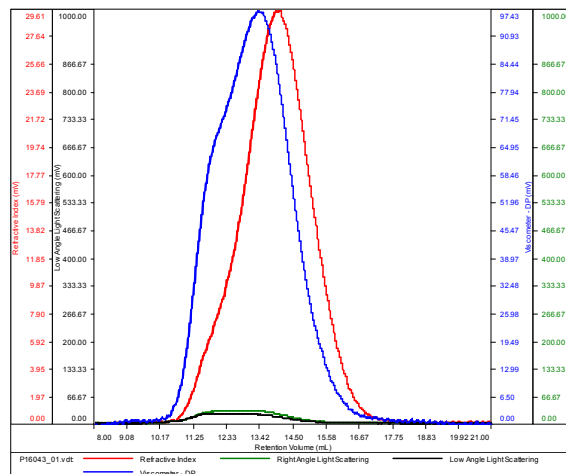
An example of hetero (rmmr) triads



SEC elugram of Homopolymer:

P16043-DMAEMA

Conc (mg/mL)	3.4506
dn/dc (mL/g)	0.0870
Method	PS80k-May-25-2016-0000.vcm
Solvent	DMF w 0.023M LiBr
Column	PSS



Sample	$M_n$	$M_w$	$M_p$	$M_w/M_n$	IV
P16043_01.vdt	186,343	374,289	192,392	2.009	0.9434

