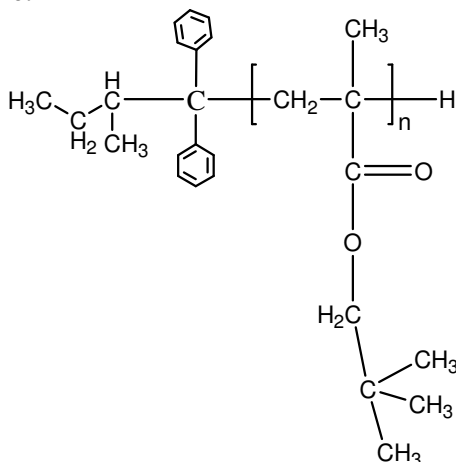


Sample Name: Poly(neopentyl methacrylate)

Sample #: P40072A-NPMA

**Structure:**



**Composition:**

$M_n \times 10^3$ (g/mol)	$M_w/M_n$
72.0	1.19

**Synthesis procedure:**

The polymer was synthesized by anionic Process

**Characterization:**

The molecular weight and polydispersity index ( $M_w/M_n$ ) of poly(neopentyl methacrylate) were obtained by size exclusion chromatography (SEC).

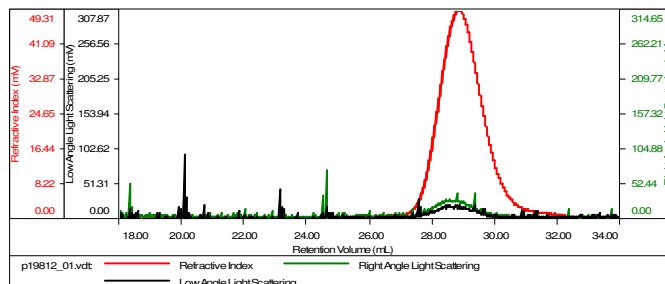
**Solubility:**

Poly(neopentyl methacrylate) is soluble in THF, chloroform, toluene, and dioxane. The polymer precipitates from hexanes, methanol, and ethanol.

**SEC elugram of the homopolymer:**

**Sample ID:** P19812-NPMA

Concentration (mg/mL)	0.5776
Sample dn/dc (mL/g)	0.0940
Method File	PS80K-March2016-0001.vcm
Column Set	3x PL 1113-6300
Solvent	THF



Sample	Mh (Da)	Mw (Da)	Mw/Mh	IV (dL/g)	Rh (nm)	Ret Vol (mL)
p19812_01.vcl	72,096	86,332	1.197	3.2294	20.79	28.813