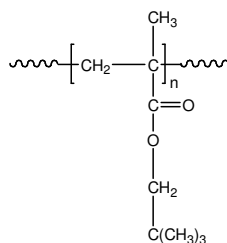


Sample Name: Poly(neopentyl methacrylate)

Sample #: P19503F-NPMA

Structure:



Composition:

Mn x 10 ³	PDI
138.0	1.6

Synthesis Procedure:

Poly(neopentyl methacrylate) was synthesized by living anionic polymerization of neopentyl methacrylate.

Characterization:

The molecular weight and polydispersity index (PDI) of Poly(neopentyl methacrylate) were obtained by size exclusion chromatography.

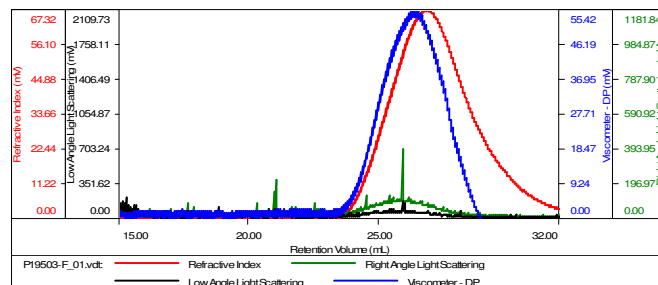
Solubility:

Poly(neopentyl methacrylate) is soluble in THF, CHCl₃, toluene and dioxane. The polymer precipitates from hexanes, methanol and ethanol.

SEC elugram of the polymer:

Sample ID: P19503f

Concentration (mg/mL)	10.7485
Sample dn/dc (mL/g)	0.0840
Method File	PS80K-4August2016-0000.vcm
Column Set	3x PL 1113-6300
Solvent	THF



Sample	Mn (Da)	Mw (Da)	Mw/Mn	IV (dL/g)	Mp (Da)
P19503-F_01.vdt	137,669	218,052	1.584	0.6400	168,006