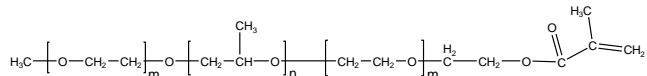


Sample Name:

Poly(ethylene oxide-b- propylene oxide -b-ethylene oxide)

Sample #: P10854A-EOPOEOMA

Structure:**Composition:**

Mn x 10 ³	PDI
0.50-b-1.1-b-0.3	1.09
Dp: 11-b-19-b-7	

Synthesis Procedure:

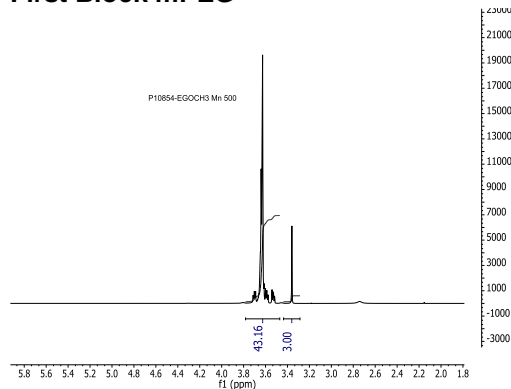
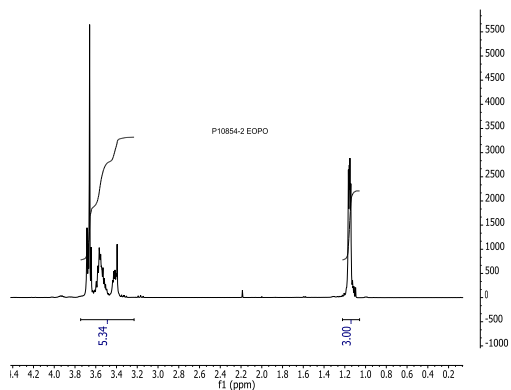
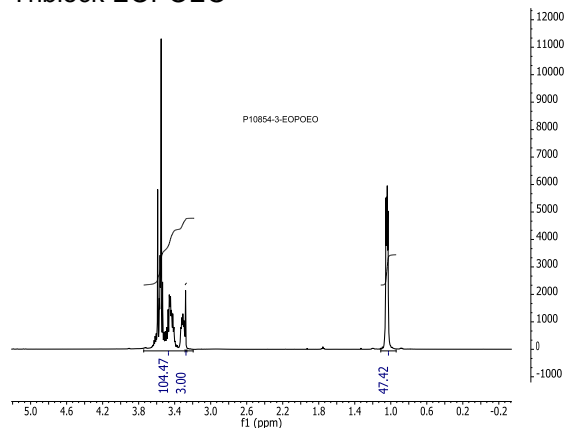
Poly(ethylene oxide-b-propylene oxide-b-ethylene oxide) is prepared by living anionic polymerization with sequence addition of monomer EO and propylene oxide.

Characterization:

The molecular weight and polydispersity index of this polymer were determined by size exclusion chromatography (SEC) using a Varian liquid chromatograph equipped with a UV and refractive index detector.

Solubility:

Polymer is soluble in THF, CHCl₃, and toluene.

First Block mPEG**mPEG-b-PO diblock****Triblock EOPOEO****EOPOEO-MA end functional****SEC of Sample:**