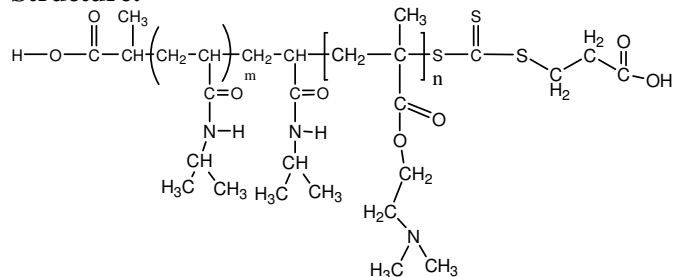


Sample Name:

Poly(N-isopropylacrylamide -b- NN-dimethylaminoethylmethacrylate)

Sample #: **P16035E-NIPAMDMAEMA**

Structure:



Composition:

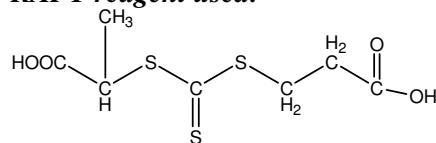
Mn x 10 ³	PDI
PNIPAM-b-NNDMAEMA	
8.0-b-80.0	2.2

Synthesis Procedure: The polymer was synthesized by RAFT process

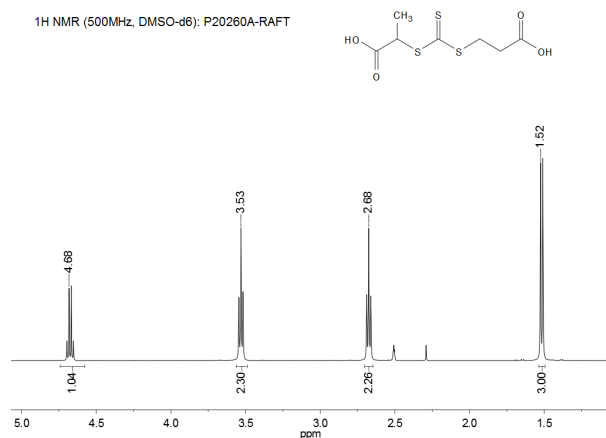
Characterization: The polymer was characterized by ¹H NMR and SEC analysis.

Solubility: The polymer is soluble in THF, DMF, Acetone.

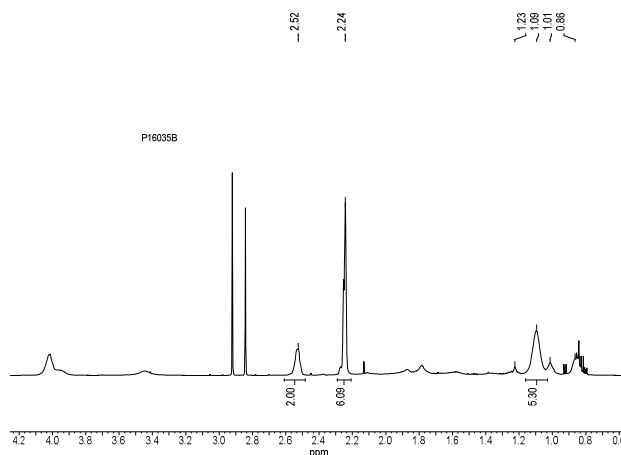
RAFT reagent used:



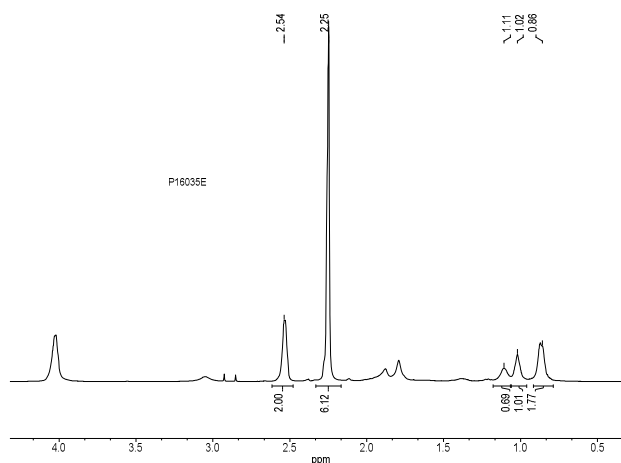
¹H NMR spectrum of the RAFT reagent:



¹H NMR spectrum of the PNIPAM-Macroinitiator in CDCl₃:



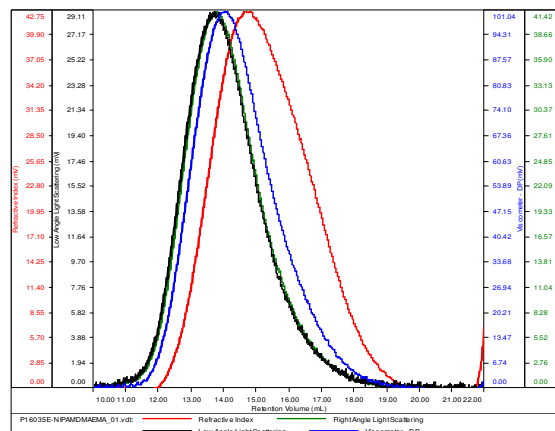
¹H NMR Spectrum of the block copolymer:



SEC elugram of the block copolymer:

**P16035 E fraction
NIPAM-DMAEMA**

Conc (mg/mL)	6.3931
dn/dc (mL/g)	0.0870
Method	PS80k-May-25-2016-0000.vcm
Solvent	DMF w/0.023M LiBr
Column	PSS



Sample	Mn	Mw	Mp	Mw/Mn	IV
P16035E-NIPAMDMAEMA_01.vct	87,897	194,868	176,424	2.217	0.5132

(v.K-01)