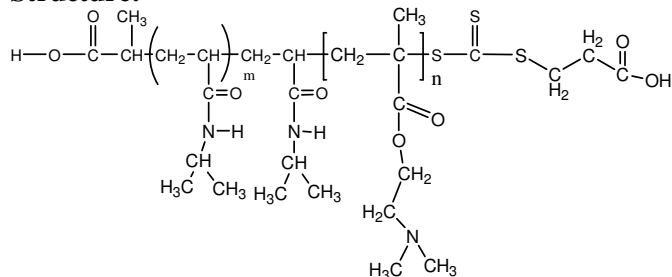


Sample Name:

Poly(N-isopropylacrylamide -b- NN-dimethylaminoethylmethacrylate)

Sample #: **P16046BF1-NIPAMDMAEMA**

Structure:



Composition:

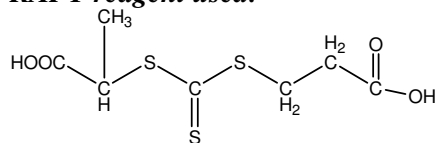
Mn x 10 ³ PNIPAM-b-PDMAEMA	PDI
1.0-b-36.0	1.40

Synthesis Procedure: The polymer was synthesized by RAFT process

Characterization: The polymer was characterized by ¹H NMR and SEC analysis.

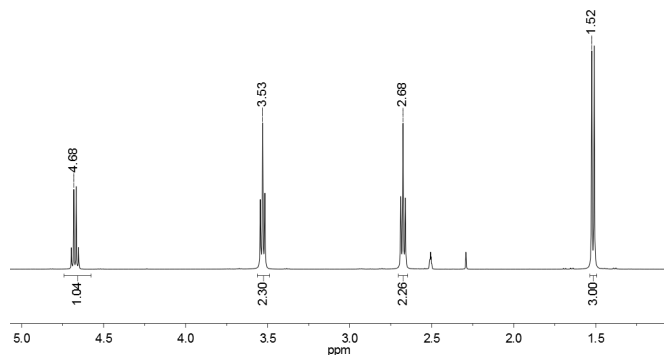
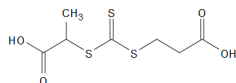
Solubility: The polymer is soluble in THF, DMF, Acetone.

RAFT reagent used:

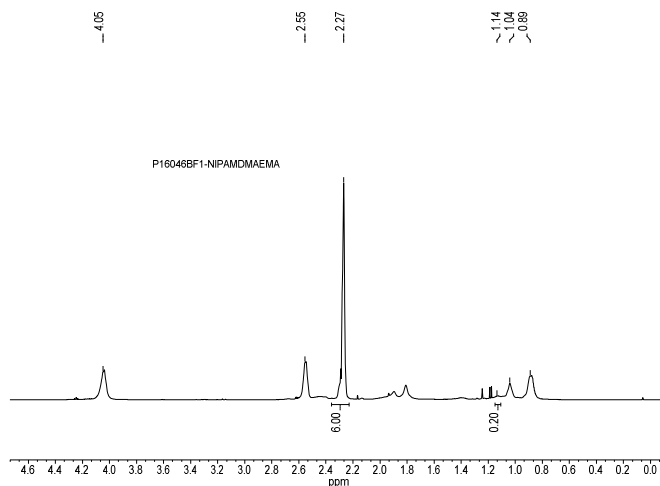


¹H NMR spectrum of the RAFT reagent:

¹H NMR (500MHz, DMSO-d₆): P20260A-RAFT



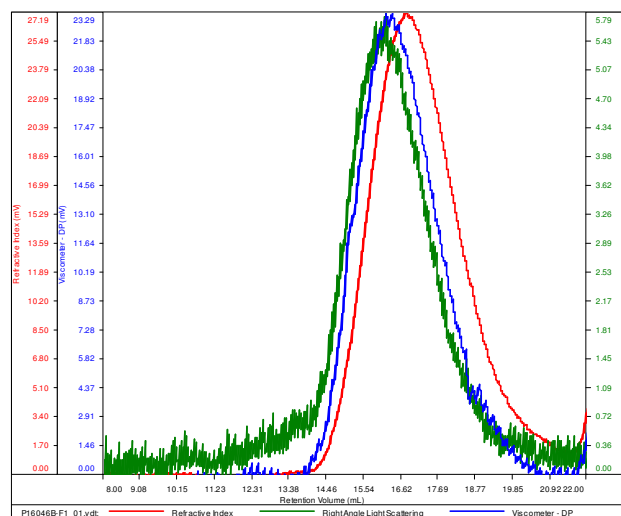
¹H NMR Spectrum of the block copolymer:



SEC elugram of the block copolymer

P16046BF1-NIPAMDMAEMA

Conc (mg/mL)	3.7589
dn/dc (mL/g)	0.0800
Method	PS80k May-25-2016-0000.vcm
Solvent	DMF w 0.023M LiBr
Column	PSS



Sample	Mn	Mw	Mp	Mw/Mn	IV
P16046B-F1_01.vdt	37,339	52,477	41,711	1.405	0.1863