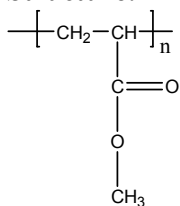


Sample Name: Poly (methyl acrylate)

Sample #: P16123-MA

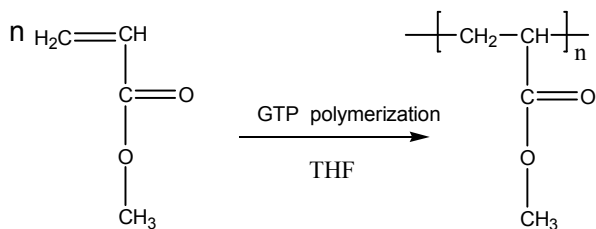
Structure:



Composition:

$M_n \times 10^3$	PDI
337.0	1.4

Synthesis Procedure:



Characterization:

The molecular weight and polydispersity index (PDI) are obtained by size exclusion chromatography (SEC) in THF. SEC analysis was performed on a Varian liquid chromatograph equipped with refractive and UV light scattering detectors. Three SEC columns from Supelco (G6000-4000-2000 HXL) were used with triple detectors from Viscotek Co.

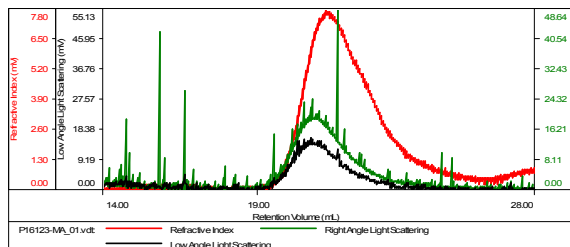
Solubility:

Poly (methyl acrylate) is soluble in THF, toluene and CHCl_3 . This polymer precipitates from methanol containing 10-15% water.

SEC of Sample:

P16123-MA

Concentration (mg/mL)	0.6470
Sample dn/dc (mL/g)	0.0880
Method File	PS80K-Nb2016-4-0000.vcm
Column Set	3x PL 1113-6000
Solvent	THF



Sample	Mn (Da)	Mw (Da)	Mw/Mn	IV (dL/g)	Mp (Da)
P16123-MA_01.vdt	337,080	460,943	1.367	2.1612	498,651