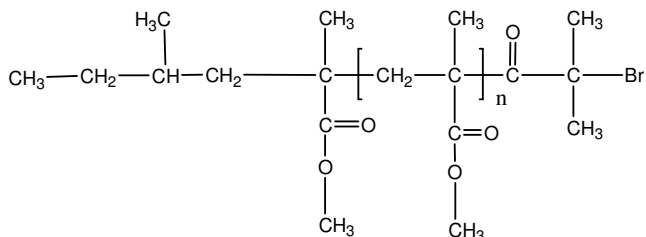


Sample Name:

α -Bromo end functionalized Poly(methyl methacrylate) isotactic rich PMMA
(Macroinitiator for ATRP)

Sample #: P40015-MMABr

Structure:



Composition:

$M_n \times 10^3$	PDI
42.0	1.4

Iso contents > 99%	
--------------------	--

Synthesis Procedure:

The Br end functionalized PMMA was prepared by anionic process.

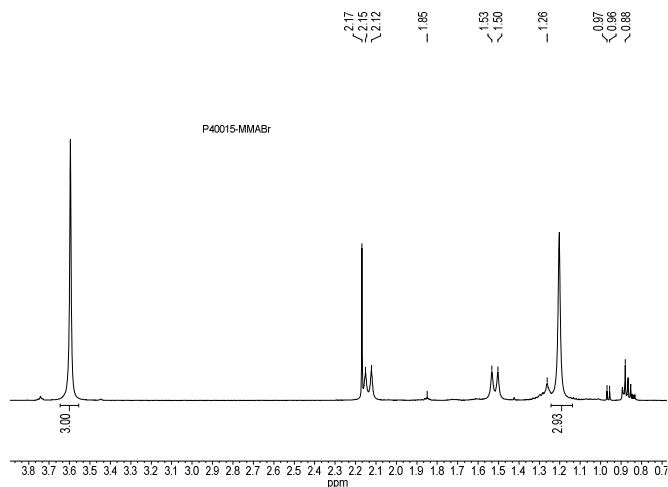
Characterization:

The molecular weight and polydispersity index of this polymer were determined by size exclusion chromatography (SEC) using a Varian liquid chromatograph equipped with a UV and refractive index detector.

Solubility:

Polymer is soluble in THF, toluene and CHCl_3 . It precipitates from methanol, ethanol, water and hexanes.

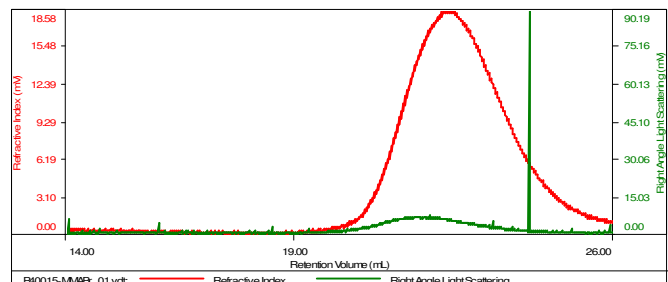
^1H NMR spectrum of the polymer:



SEC elugram of the polymer:

Sample ID: P40015-SMMABr

Concentration (mg/mL)	2.2594
Sample dn/dc (mL/g)	0.0940
Method File	PS80K-4August2016-0000.vcm
Column Set	3x PL 1113-6300
Solvent	THF



Sample	M _n (Da)	M _w (Da)	M _w /M _n	IV (dL/g)	M _p (Da)
P40015-MMABr_01.vdt	41,821	60,399	1.444	0.2168	43,646