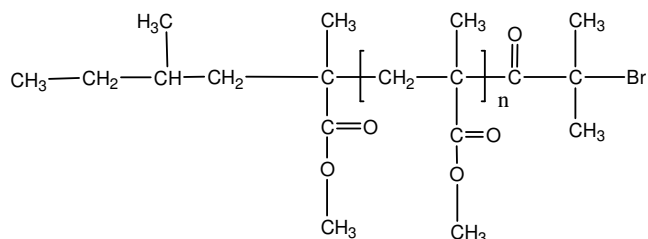


Sample Name:

α -Bromo end functionalized Poly(methyl methacrylate) isotactic rich PMMA
(Macroinitiator for ATRP)

Sample #: P40015A-MMABr

Structure:



Composition:

$M_n \times 10^3$	PDI
77.0	1.12

Iso contents > 99%	
--------------------	--

Synthesis Procedure:

The Br end functionalized PMMA is prepared by anionic process.

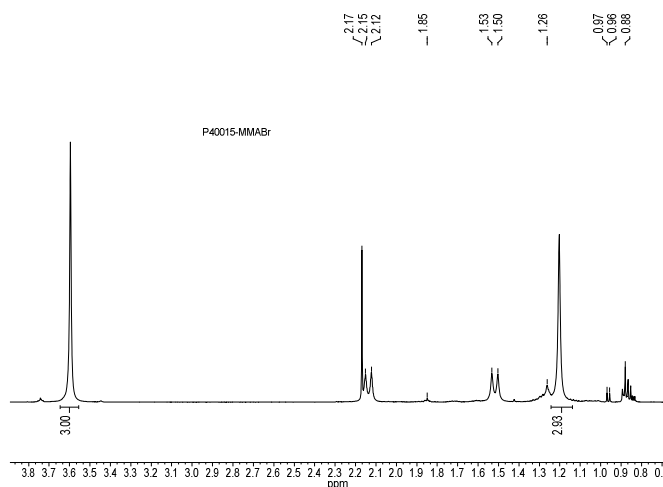
Characterization:

The molecular weight and polydispersity index of this polymer were determined by size exclusion chromatography (SEC) using a Varian liquid chromatograph equipped with a UV and refractive index detector.

Solubility:

Polymer is soluble in THF, toluene and CHCl_3 . It precipitates from methanol, ethanol, water and hexanes.

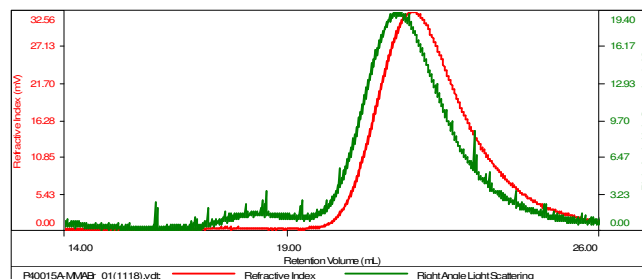
^1H NMR spectrum of the polymer:



SEC elugram of the polymer:

Sample ID: P40015A-MMABr

Concentration (mg/mL)	3.6468
Sample dn/dc (mL/g)	0.0840
Method File	PS80K-4August2016.0000.vcm
Column Set	3x PL 1113-6000
Solvent	THF



Sample	Mh (Da)	Mw (Da)	Mw/Mh	IV (dL/g)	Mp (Da)
P40015A-MMABr_01(1118)	76,396	86,087	1.127	0.3544	81,671