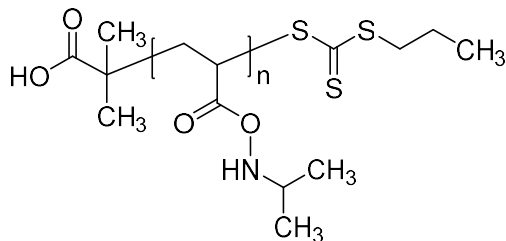


Sample Name: Poly(N-isopropylacrylamide),
RAFT-terminated

Sample #: P16067-NIPAM-RAFT macroinitiator

Structure:



Composition:

Mn x 10 ³	PDI
8.5	1.4

Synthesis Procedure:

The poly(N-isopropylacrylamide) was prepared by RAFT controlled process.

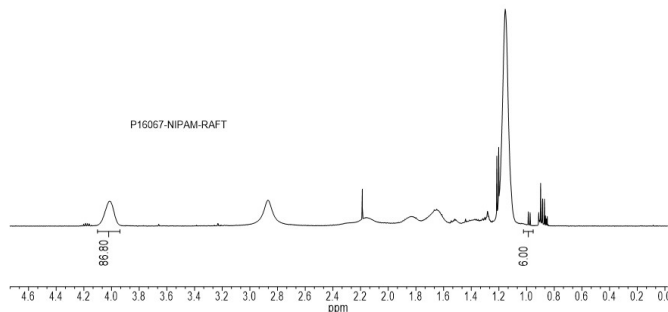
Characterization:

The molecular weight and polydispersity index (PDI) are obtained by size exclusion chromatography (SEC) in DMF. SEC analysis was performed on a Varian liquid chromatograph equipped with refractive and light scattering detectors.

Solubility:

Poly(N-isopropylacrylamide) is soluble methanol, ethanol.

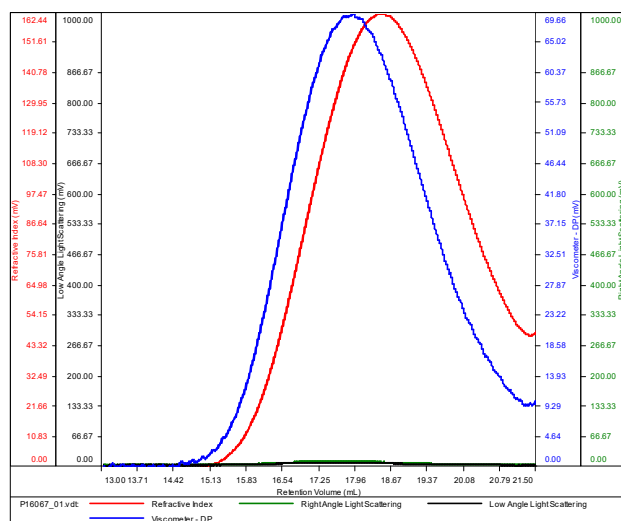
¹H NMR spectrum of the product in CDCl₃:



SEC chromatogram of the polymer:

P16067-NIPAM-RAFT

Conc (mg/mL)	27.0261
dn/dc (mL/g)	0.0770
Method	PS80k-May-25-2016-0000.vcm
Solvent	DMF w 0.023M LiBr
Column	PSS



Sample	Mn	Mw	Mp	Mw/Mn	IV
P16067_01.vdt	8,522	12,406	11,366	1.456	0.0919