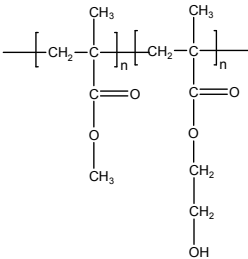


Sample Name: Poly (methylmethacrylate-b-2-hydroxy ethyl methacrylate)

Sample #: P40269-MMAHEMA

Structure:



Composition:

$M_n \times 10^3$ MMA-b-HEMA	PDI
28.0-b-63.0	1.27
T_g for MMA block: 128°C	T_g for HEMA block: NF

Synthesis Procedure:

The polymer was synthesized by anionic polymerization

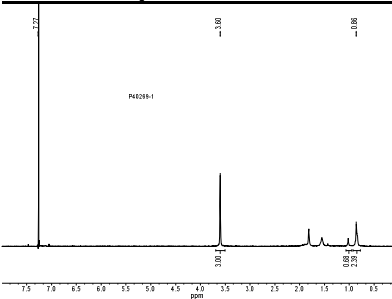
Characterization:

The product was characterized by size exclusion chromatography (SEC) and 1H NMR and Thermal analysis

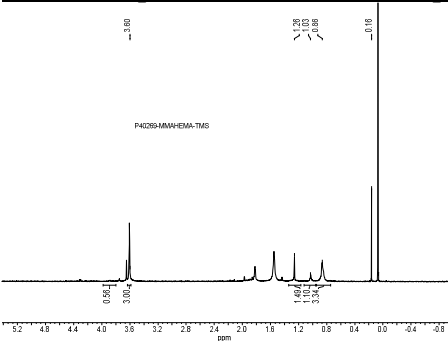
Solubility:

The polymer is soluble in DMF.

1H -NMR Spectrum of the first Block:



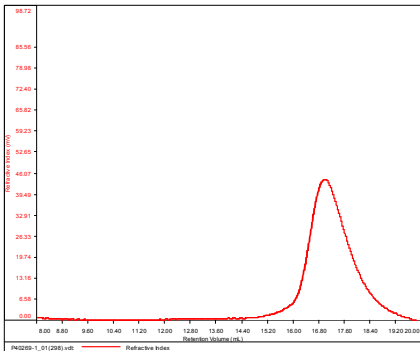
1H -NMR Spectrum of the block copolymer



SEC of the MMA Block:

P40269-MMA Block

Conc (mg/mL)	2.9873
dn/dc (mL/g)	0.0650
Method	PS80k+October192016-0000.vcm
Solvent	DMF w 0.023M LiBr
Column	PSS

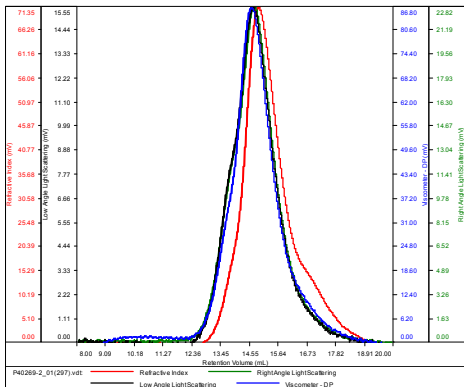


Sample	Mn	Mw	Mp	Mw/Mn	IV
P40269-1_01(298).vdt	28.192	42.914	26.483	1.522	0.1180

SEC of the block copolymer:

P40269-MMA-HEMA

Conc (mg/mL)	5.9217
dn/dc (mL/g)	0.0650
Method	PS80k+October192016-0000.vcm
Solvent	DMF w 0.023M LiBr
Column	PSS



Sample	Mn	Mw	Mp	Mw/Mn	IV
P40269-2_01(297).vdt	91.423	116.673	107.096	1.276	0.3014

DSC thermogram for MMA block:

