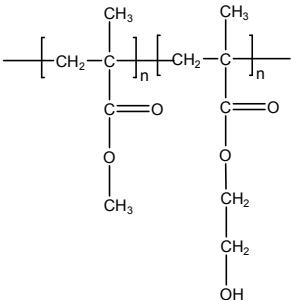


Sample Name: Poly (methylmethacrylate-b-2-hydroxy ethyl methacrylate)

Sample #: P40261-MMAHEMA

Structure:



Composition:

Mn × 10 ³ MMA-b-HEMA	PDI
57.0-b-146.0	1.9
T _g for MMA block: 128°C	T _g for HEMA block: NF

Synthesis Procedure:

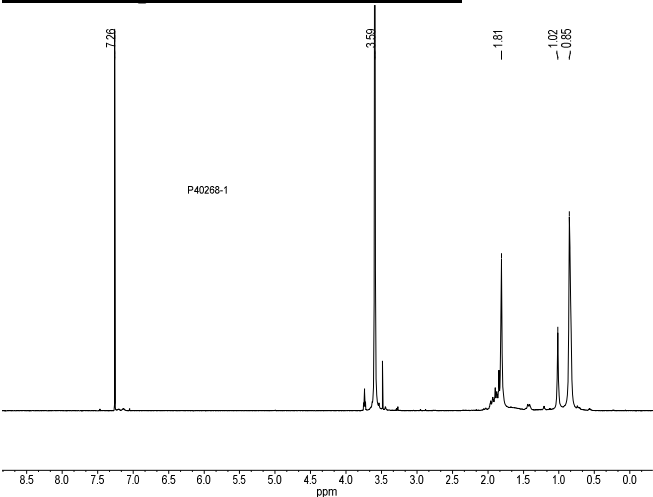
The polymer was synthesized by anionic polymerization.

Characterization: The product was characterized by size exclusion chromatography (SEC), ¹H NMR and Thermal analysis.

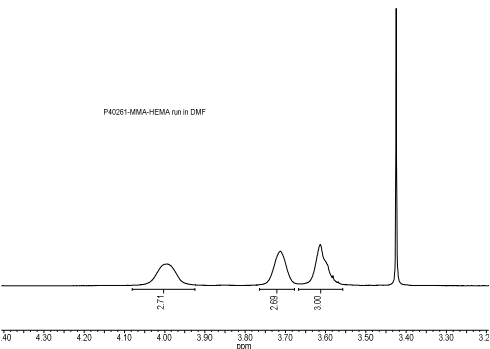
Solubility:

The polymer is soluble in DMF.

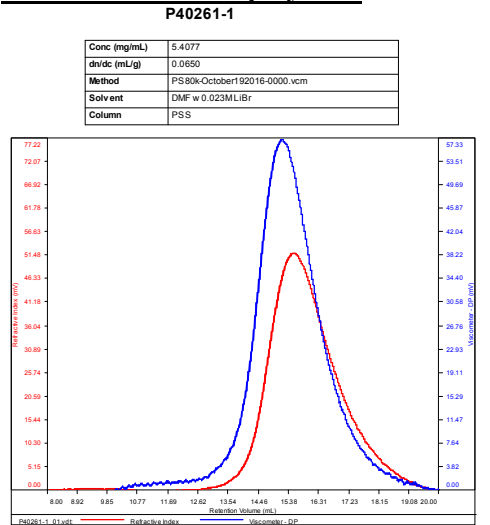
¹H-NMR Spectrum of the first Block:



¹H-NMR Spectrum of the block copolymer in DMF

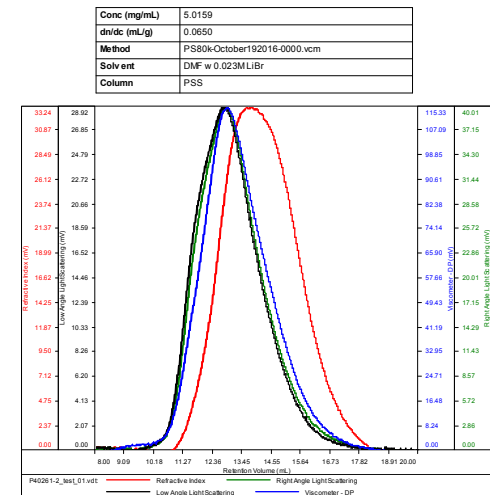


SEC of the block copolymer:



Sample	Mn	Mw	Mp	Mw/Mn	IV
P40261-1_01.vdt	57,391	81,034	74,493	1.412	0.2596

P40261-MAHEMA



Sample	Mn	Mw	Mp	Mw/Mn	IV
P40261-2_test_01.vdt	203,183	394,832	308,564	1.943	0.7155