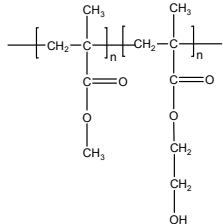


Sample Name:

**Poly (methylmethacrylate-b-2-hydroxy ethyl methacrylate)**

Sample #: P40268-MMAHEMA

**Structure:**



**Composition:**

$M_n \times 10^3$ MMA-b-HEMA	PDI
65.0-b-3.-0	1.23
$T_g$ for MMA block: 128°C	$T_g$ for HEMA block: NF

**Synthesis Procedure:**

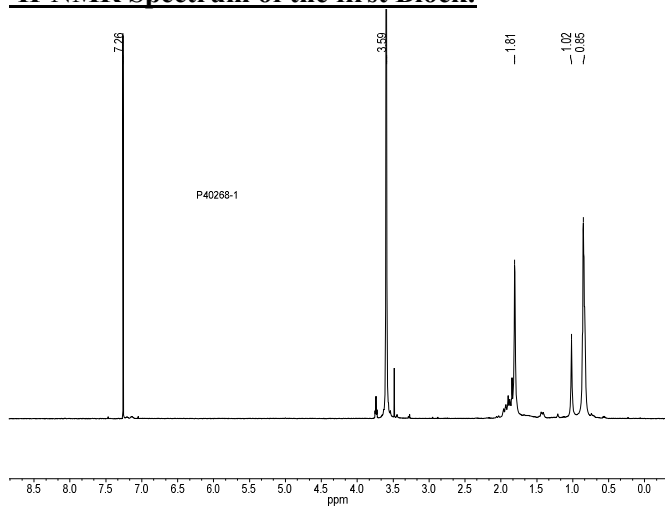
The polymer was synthesized by anionic polymerization.

**Characterization:** The product was characterized by size exclusion chromatography (SEC) and  $^1\text{H}$  NMR and Thermal analysis.

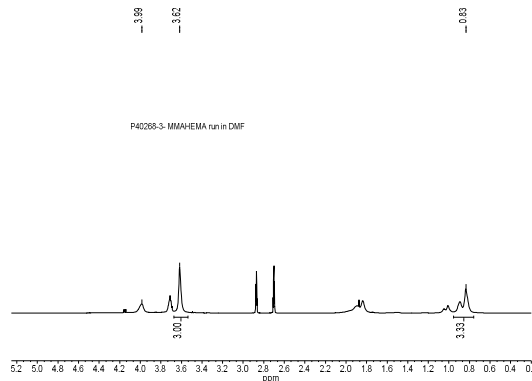
**Solubility:**

The polymer is soluble in DMF.

**$^1\text{H}$ -NMR Spectrum of the first Block:**



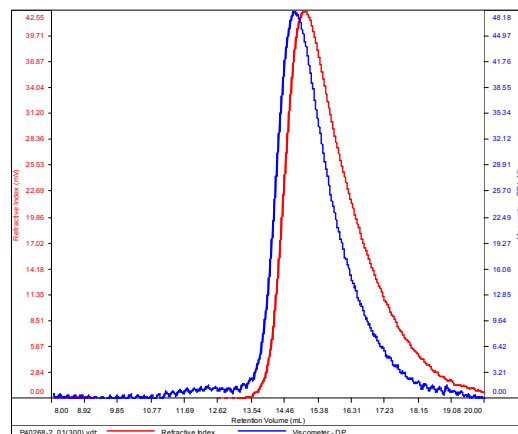
**$^1\text{H}$ -NMR Spectrum of the block copolymer in DMF**



**SEC of the block copolymer:**

P40268-MMA-HEMA

Conc (mg/mL)	4.1133
dn/dc (mL/g)	0.0650
Method	PS80k-October192016-0000.vcm
Solvent	DMF w 0.023M LiBr
Column	PSS



Sample	$M_n$	$M_w$	$M_p$	$M_w/M_n$	IV
P40268-2_01(300).vdt	66,078	83,938	93,969	1.233	0.2426

**DSC thermogram for MMA block:**

