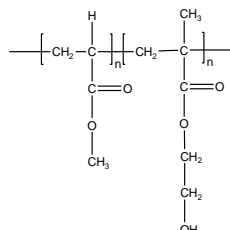


Sample Name: Poly (methyl acrylate–b–2-Hydroxy ethyl methacrylate)

Sample #: P16114A-MAHEMA

Structure:



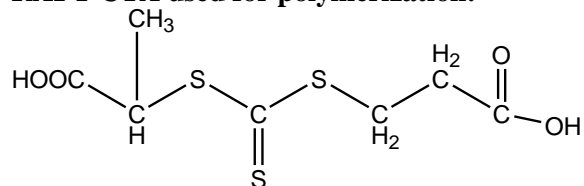
Composition:

$M_n \times 10^3$ MA–b–HEMA	PDI
21.0-b-159.5	1.58

Synthesis Procedure:

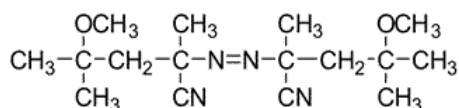
The polymer was synthesized by RAFT polymerization process by sequential addition of MA and HEMATMS monomer, followed by hydrolysis in acetone in the presence of trifluoroacetic acid.

RAFT CTA used for polymerization:

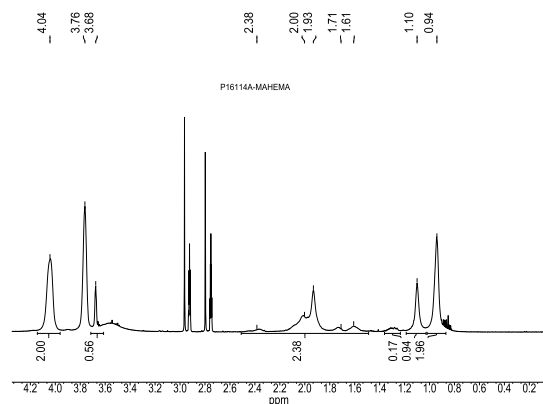


Initiator (V70):

2,2'-Azobis(4-methoxy-2,4-dimethylvaleronitrile)



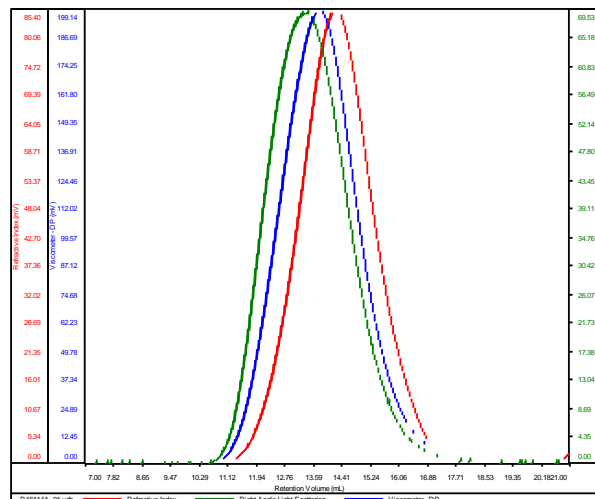
^1H NMR of the MA-b-HEMA run in d7-DMF



SEC elugram of the block copolymer:

P16114A-MAHEMA

Conc	13.4617
dn/dc	0.0650
Solvent	DMF w 0.023M LiBr
Flow Rate	0.7000
Method	PS100k_2017-Oct11-0000.vcm



Sample	Mn	Mw	Mp	Mw/Mn	IV
P16114A_01.vdt	180,666	285,314	189,644	1.579	0.4372