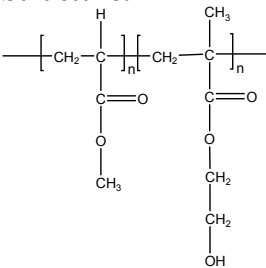


Sample Name: Poly (methyl acrylate–b–2-Hydroxy ethyl methacrylate)

Sample #: P40273E–MAHEMA

Structure:



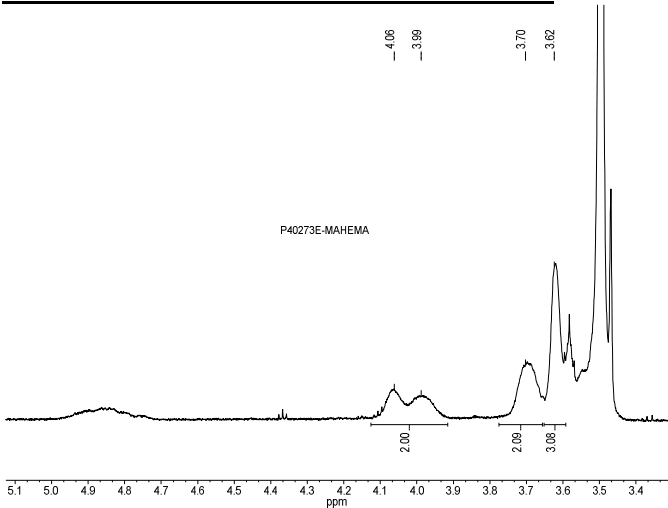
Composition:

$M_n \times 10^3$ MA–b–HEMA	PDI
17.5-b-35.5	2.9

Synthesis Procedure:

The polymer was synthesized by GTP polymerization process. MA first polymerized followed by addition of HEMATMS monomer.

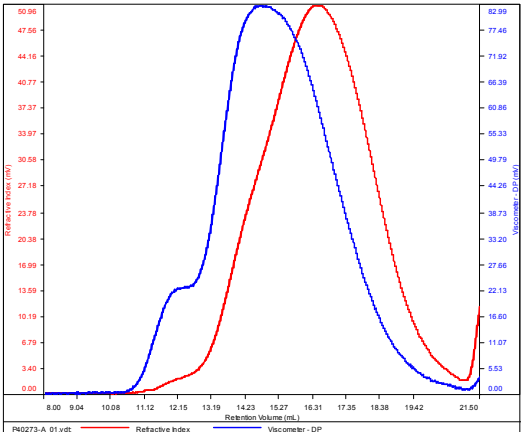
HNMR of the MA-b-HEMA run in d7 DMF



SEC of the block copolymer:

P40273-PMA block

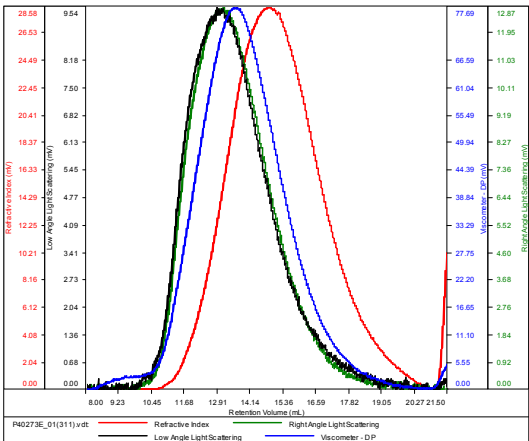
Conc (mg/mL)	19.5177
dn/dc (mL/g)	0.0650
Method	PS80k_December-2016-0004.vcm
Solvent	DMF w 0.023M LiBr
Column	PSS



Sample	Mn	Mw	Mp	Mw/Mn	IV
P40273-A_01.vdt	17,446	37,184	22,438	2.131	0.1920

P40273E-MAHEMA

Conc (mg/mL)	5.2185
dn/dc (mL/g)	0.0650
Method	PS80k-October192016-0000.vcm
Solvent	DMF w 0.023M LiBr
Column	PSS



Sample	Mn	Mw	Mp	Mw/Mn	IV
P40273E_01(311).vdt	53,614	159,414	91,821	2.973	0.6087