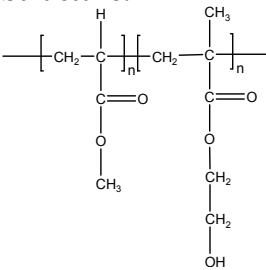


Sample Name: Poly (methyl acrylate–b–2-Hydroxy ethyl methacrylate)

Sample #: P40299G–MAHEMA

Structure:



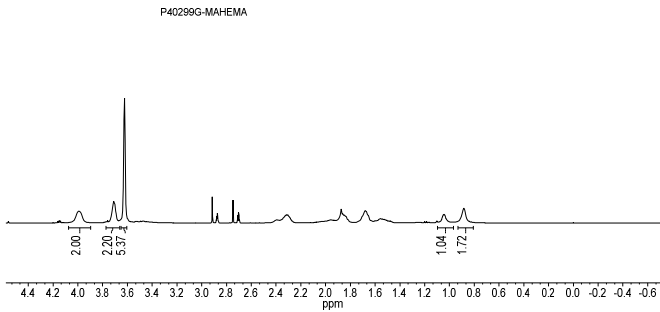
Composition:

| | |
|---|------------|
| $M_n \times 10^3$ MA–b–HEMA 20.5-b-24.5 | PDI 1.7 |
|---|------------|

Synthesis Procedure:

The polymer was synthesized by GTP polymerization process. MA first polymerized followed by addition of HEMATMS monomer.

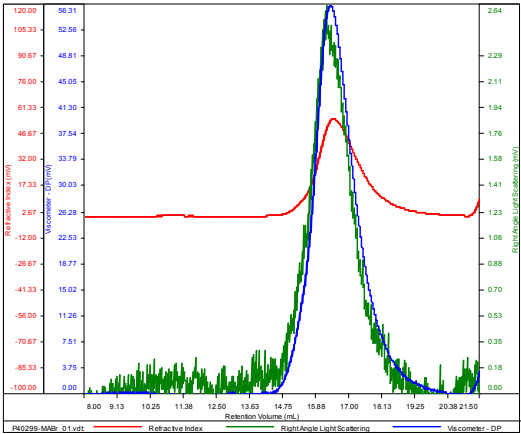
HNMR of the MA-b-HEMA run in d7 DMF



SEC of the block copolymer:

P40299-MABr

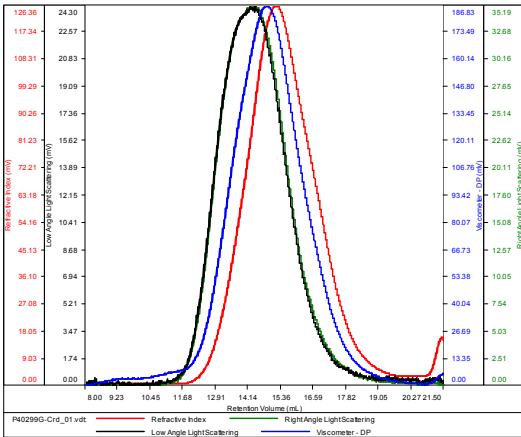
| | |
|--------------|------------------------------|
| Conc (mg/mL) | 13.1674 |
| dn/dc (mL/g) | 0.0430 |
| Method | PS80k_December-2016-0004.vcm |
| Solvent | DMF w 0.023M LiBr |
| Column | PSS |



| Sample | Mn | Mw | Mp | Mw/Mn | IV |
|--------------------|--------|--------|--------|-------|--------|
| P40299-MABr_01.vdt | 20,711 | 26,973 | 21,746 | 1.302 | 0.0780 |

P40299G-MAHEMATMS

| | |
|--------------|------------------------------|
| Conc (mg/mL) | 35.5440 |
| dn/dc (mL/g) | 0.0650 |
| Method | PS80k_December-2016-0004.vcm |
| Solvent | DMF w 0.023M LiBr |
| Column | PSS |



| Sample | Mn | Mw | Mp | Mw/Mn | IV |
|--------------------|--------|---------|--------|-------|--------|
| P40299G-Crd_01.vdt | 59,026 | 102,544 | 80,198 | 1.737 | 0.1765 |

Mn for HEMA Block: 24,500