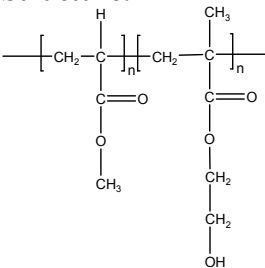


Sample Name: Poly (methyl acrylate–b–2-Hydroxy ethyl methacrylate)

Sample #: P40299E-MAHEMA

Structure:



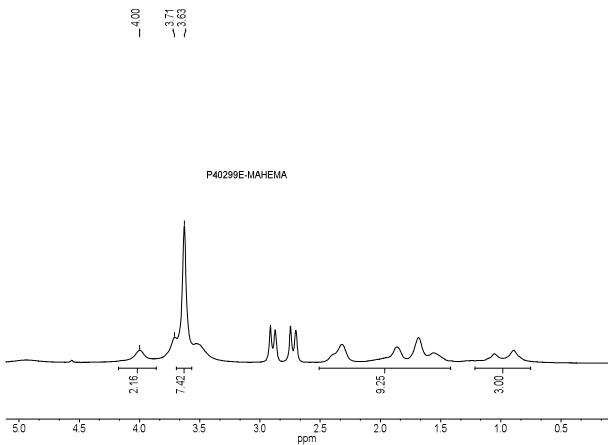
Composition:

$M_n \times 10^3$ MA-b-HEMA 20.5-b-42.5	PDI 3.0
---	------------

Synthesis Procedure:

The polymer was synthesized by ATRP polymerization process. MA first polymerized followed by addition of HEMATMS monomer.

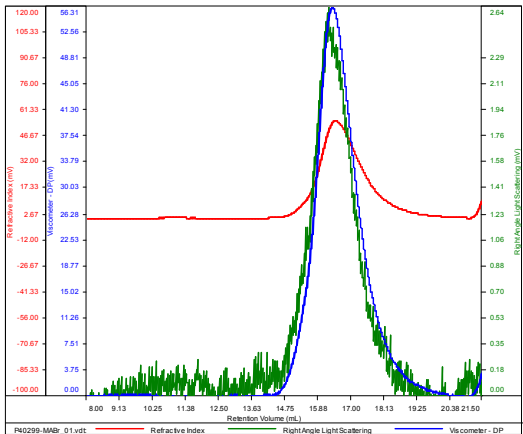
HNMR of the MA-b-HEMA run in d7 DMF



SEC of the block copolymer:

P40299-MABr

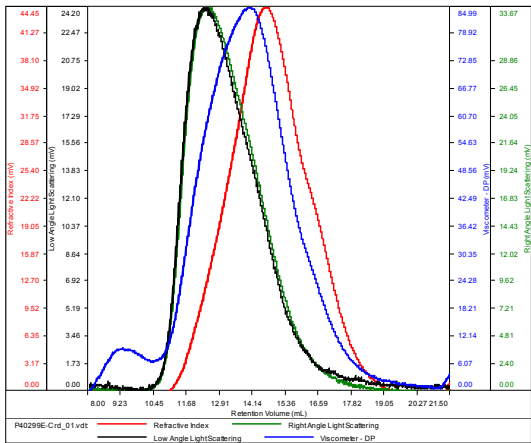
Conc (mg/mL)	13.1674
dn/dc (mL/g)	0.0430
Method	PS80k_December-2016-0004.vcm
Solvent	DMF w 0.023M LiBr
Column	PSS



Sample	Mn	Mw	Mp	Mw/Mn	IV
P40299-MABr_01.vdt	20,711	26,973	21,746	1.302	0.0780

P40299E-MA-HEMATMS

Conc (mg/mL)	14.2699
dn/dc (mL/g)	0.0650
Method	PS80k_December-2016-0004.vcm
Solvent	DMF w 0.023M LiBr
Column	PSS



Sample	Mn	Mw	Mp	Mw/Mn	IV
P40299E-Cnd_01.vdt	86,129	258,096	128,500	2.997	0.2522

PHEMA Mn : 42,500