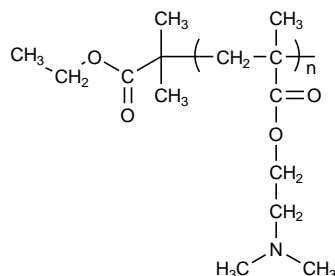


Sample Name:

**Poly-(N, N-dimethylaminoethyl methacrylate)**

Sample #: **P16078-DMAEMA**

**Structure:**



**Composition:**

$M_n \times 10^3$	215.0
PDI	1.52

**Synthesis:**

Poly (N, N-dimethylaminoethyl methacrylate) was synthesized by atom transfer radical polymerization.

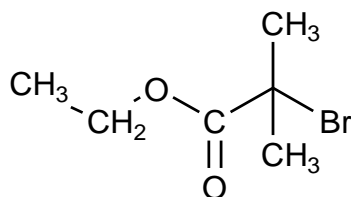
**Characterization:**

The molecular weight and polydispersity index (PDI) of Poly (N, N-dimethylaminoethyl methacrylate) were obtained by size exclusion chromatography (SEC).

**Solubility:**

The polymer is soluble in THF, DMF, and Acetone.

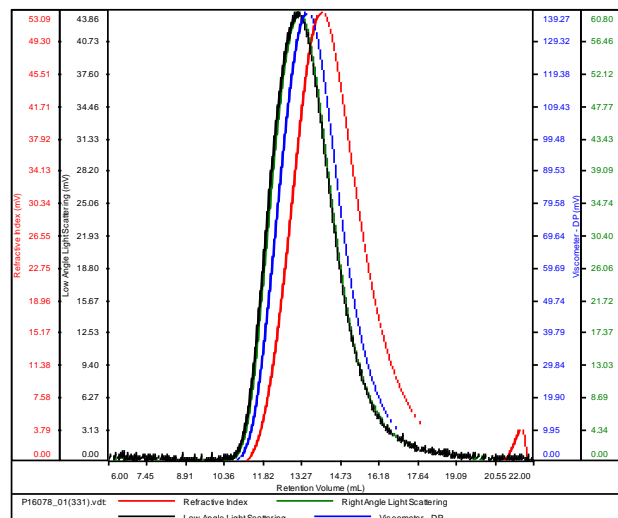
**ATRP reagent used for polymerization:**



**SEC elugram of the polymer:**

**P16078-DMAEMA**

Conc (mg/mL)	12.2973
dn/dc (mL/g)	0.0800
Method	PS80k_December-2016-0004.vcm
Solvent	DMF w 0.023M LiBr
Column	PSS



Sample	Mn	Mw	Mp	Mw/Mn	IV
P16078_01(331).vdt	215,193	328,049	273,145	1.524	0.3477