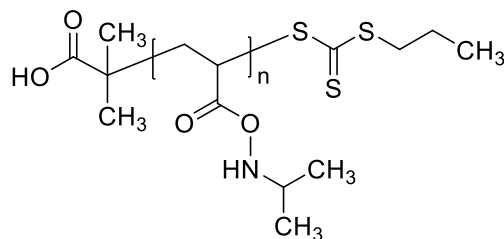


**Sample Name:** Poly (N-isopropylacrylamide), RAFT-agent terminated

**Sample #:** P16065-NIPAM-RAFT macroinitiator

**Structure:**



**Composition:**

Mn x 10 <sup>3</sup>	PDI
13.0	1.5

**Synthesis Procedure:**

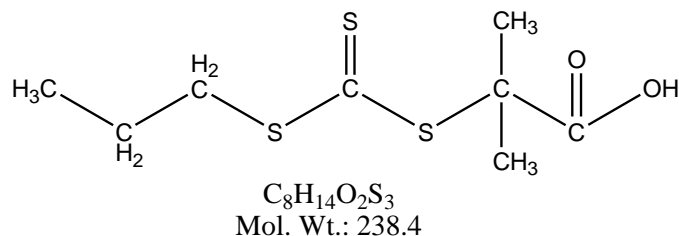
The poly (N-isopropylacrylamide) was prepared by RAFT controlled radical process.

**Characterization:**

The molecular weight and polydispersity index (PDI) are obtained by size exclusion chromatography (SEC) in DMF. SEC analysis was performed on a Varian liquid chromatograph equipped with refractive and light scattering detectors.

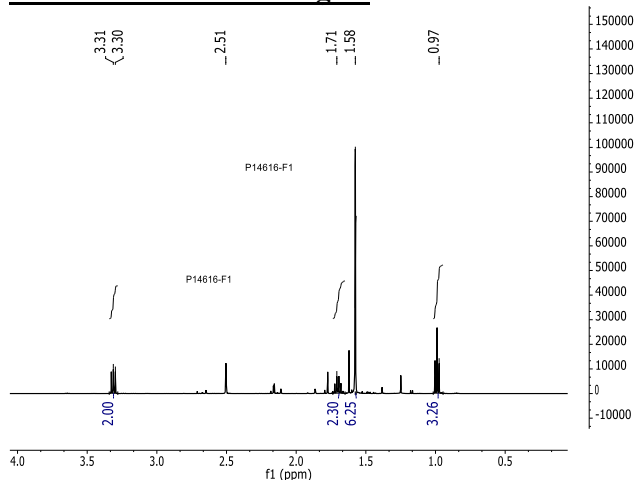
**Solubility:**

Poly (N-isopropylacrylamide) is soluble in methanol, ethanol.

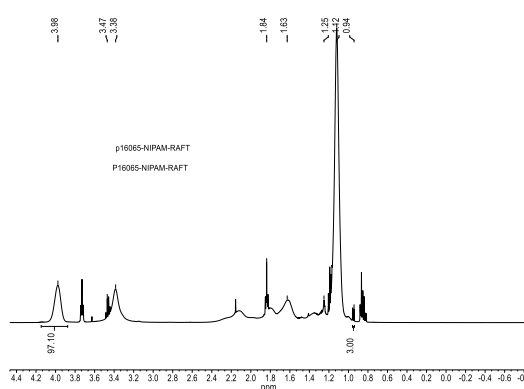


RAFT initiator

**HNMR of the RAFT reagent**



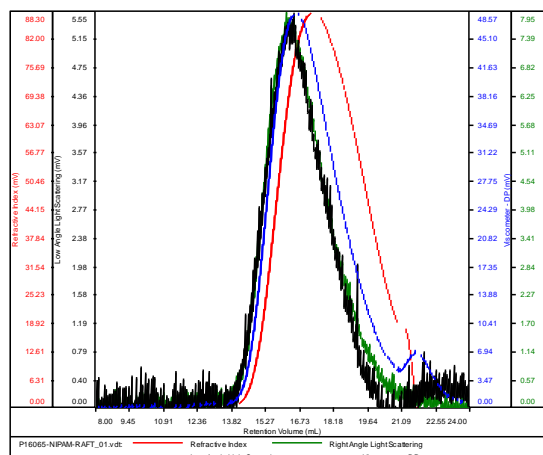
**HNMR of the polymer in CdCl3**



**SEC elugram of the polymer:**

P16065-NIPAM-RAFT

Conc (mg/mL)	27.8848
dn/dc (mL/g)	0.0770
Method	PS80k_December-2016-0004.vcm
Solvent	DMF w 0.023M LiBr
Column	PSS



Sample	Mn	Mw	Mp	Mw/Mn	IV
P16065-NIPAMRAFT_01.vdt	13,195	20,023	19,215	1.517	0.0660