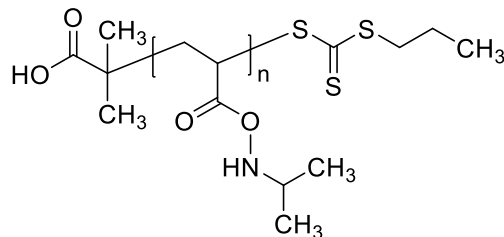


Sample Name:

Poly (N-isopropylacrylamide), RAFT-agent terminated

Sample #: **P16069-NIPAM-RAFT macroinitiator**

Structure:

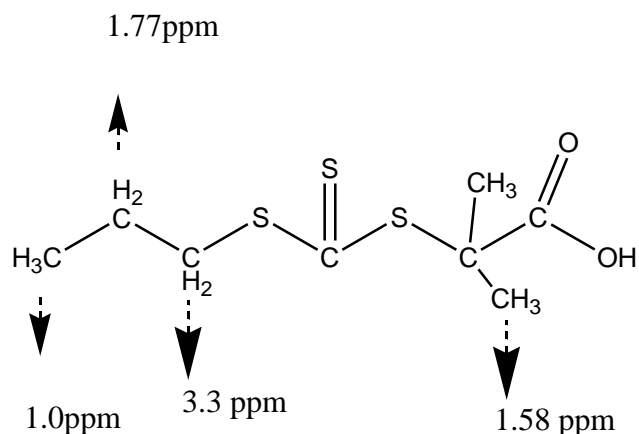


Composition:

Mn x 10 ³	PDI
4.5	1.15

Synthesis Procedure:

The poly (N-isopropylacrylamide) was prepared by RAFT controlled radical process.



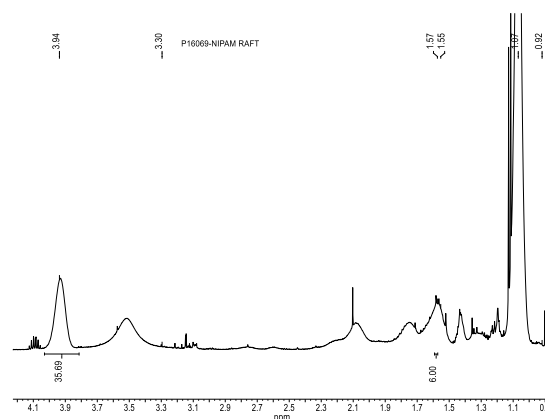
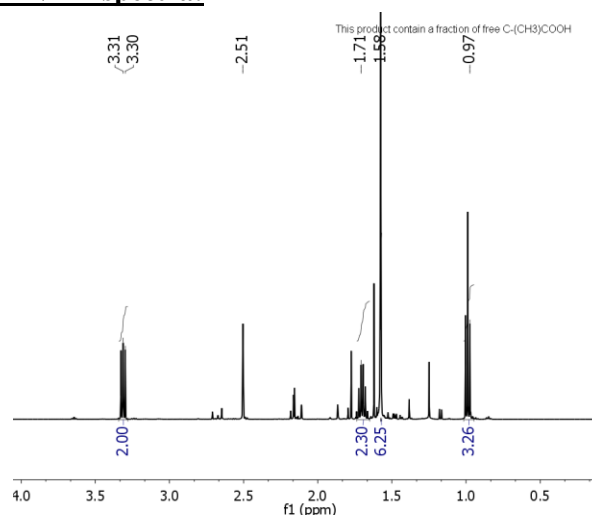
Characterization:

The molecular weight and polydispersity index (PDI) are obtained by size exclusion chromatography (SEC) in DMF. SEC analysis was performed on a Varian liquid chromatograph equipped with refractive and light scattering detectors.

Solubility:

Poly (N-isopropylacrylamide) is soluble in methanol, ethanol.

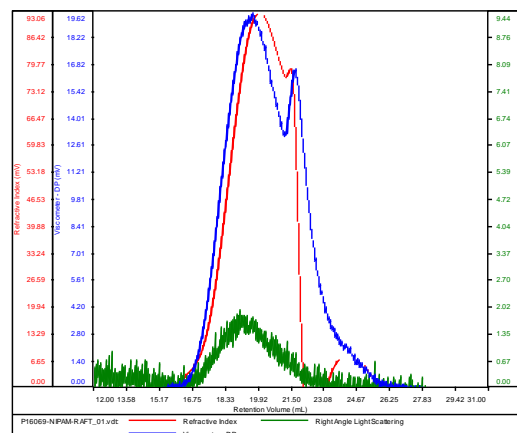
1H-NMR spectra:



SEC chromatogram :

P16069-NIPAM-RAFT

Conc (mg/mL)	21.1430
dn/dc (mL/g)	0.0770
Method	PS80k_December-2016-0004.vcm
Solvent	DMF w 0.023M LiBr
Column	PSS



Sample	Mn	Mw	Mp	Mw/Mn	IV
P16069-NIPAMRAFT_01.vdt	4,283	4,892	3,776	1.142	0.0303