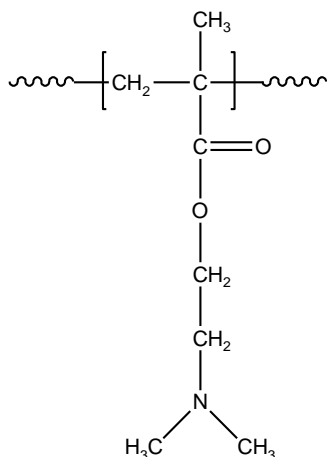


Sample Name:
Poly (N, N-dimethylaminoethyl methacrylate)

Sample # P16053-DMAEMA

Structure:



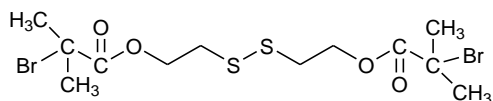
Composition:

Mn x 10 ³	PDI
44.0	1.8

Synthesis Procedure:

Poly (N, N-dimethylaminoethyl methacrylate) was synthesized by controlled radical polymerization.

ATRP reagent used for polymerization:



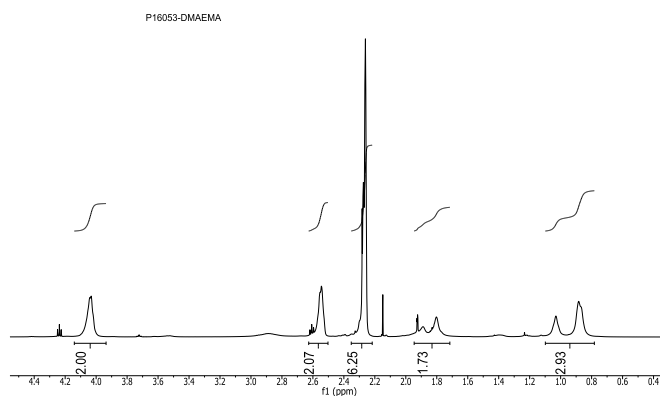
Characterization:

The molecular weight and polydispersity index (PDI) of Poly (N, N-dimethylaminoethyl methacrylate) were obtained by size exclusion chromatography (SEC).

Solubility:

Poly (N, N-dimethylaminoethyl methacrylate) is soluble in THF, chloroform, ethanol.

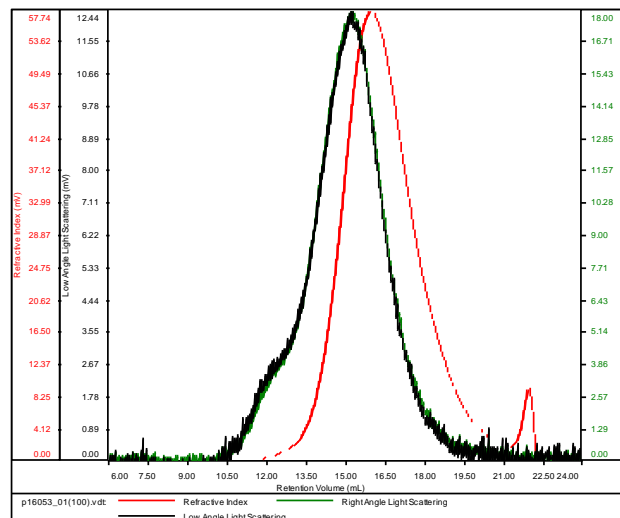
¹H NMR Spectrum of the homopolymer P16053:



SEC elugram of the polymer:

P16053-DMAEMA

Conc (mg/mL)	8.7615
dn/dc (mL/g)	0.0800
Method	PS80k-May-25-2016-0000.vcm
Solvent	DMF w 0.023M LiBr
Column	PSS



Sample	Mn	Mw	Mp	Mw/Mn	IV
p16053_01(100).vdt	44,109	81,652	70.003	1.851	0.2375