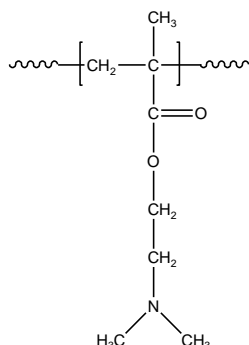


Sample Name:
Poly-(NN-dimethylaminoethylmethacrylate)

Sample #: **P16057E-DMAEMA**

Structure:



Composition:

Mn x 10 ³	47.5
PDI	1.27

Synthesis:

Poly (N, N-dimethylaminoethyl methacrylate) was synthesized by RAFT polymerization.

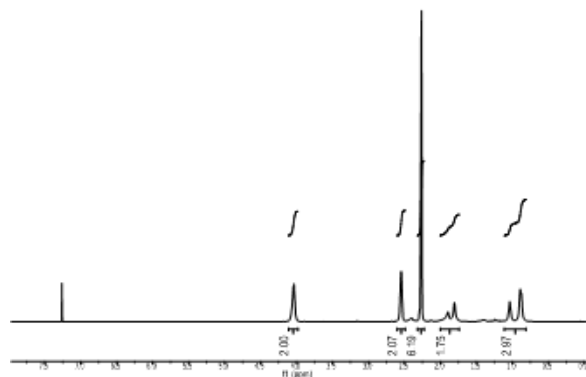
Characterization:

The molecular weight and polydispersity index (PDI) of Poly (N, N-dimethylaminoethyl methacrylate) were obtained by size exclusion chromatography (SEC).

Solubility:

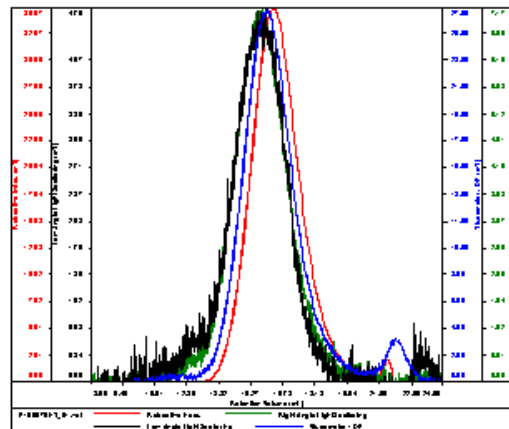
The polymer is soluble in THF, DMF, and Acetone.

¹H NMR Spectrum of the homopolymer P16057E



SEC elugram of the polymer:

Gene integrat.	1.0450
Integrat. (g)	0.0000
File	P16057E_December-2018-0004.xml
Software	DMF v 0.0000000
Column	PSS



Sample	FW	FW	FW	FW	FW
P16057E_P1.xml	47.510	50.110	48.110	1.271	0.110