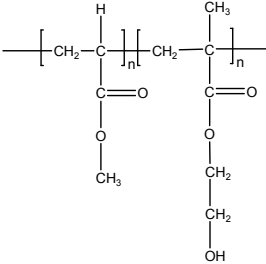


Sample Name:
Poly (methyl acrylate-b-2-Hydroxy ethyl methacrylate)

Sample #: P40309-MAHEMA

Structure:



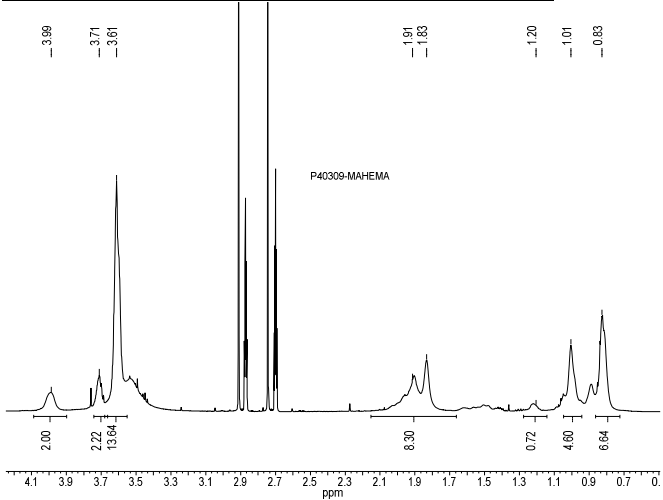
Composition:

$M_n \times 10^3$ MA-b-HEMA	PDI
34.0-b-12.5	2.5

Synthesis Procedure:

The polymer was synthesized by GTP polymerization process. MA first polymerized followed by addition of HEMATMS monomer.

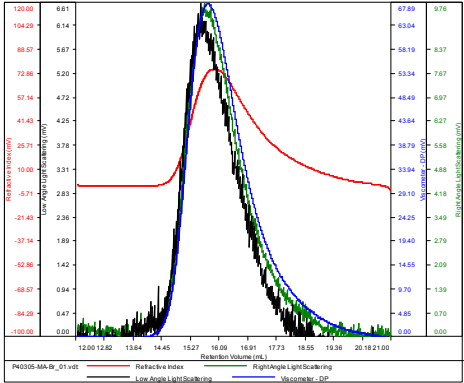
HNMR of the MA-b-HEMA run in d7 DMF



SEC elugram of the block copolymer:
(PMA-Br macroinitiator used in the Block copolymerization)

P40305-MABr

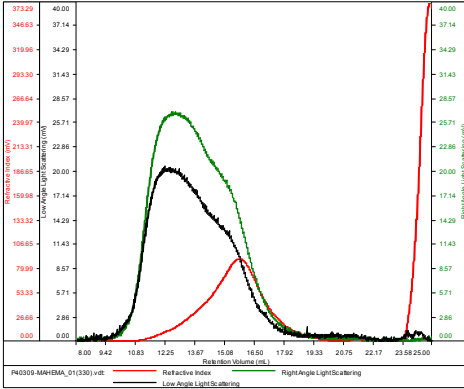
Conc (mg/mL)	14.7365
div/c (mL/g)	0.0650
Method	PS80k_December2016-0004.vcm
Solvent	DMF w 0.023M LiBr
Column	PSS



Sample	Mn	Mw	Mp	Mw/Mn	IV
P40305-MABr_01.vdt	33,991	39,304	40,587	1.156	0.0961

P40309-MAHEMA

Conc (mg/mL)	24.5164
div/c (mL/g)	0.0700
Method	PS80k_December2016-0004.vcm
Solvent	DMF w 0.023M LiBr
Column	PSS



Sample	Mn	Mw	Mp	Mw/Mn	IV
P40309-MAHEMA_01(330).vdt	59,354	149,565	56,205	2.520	0.1875

Mn for HEMA Block: 12,500