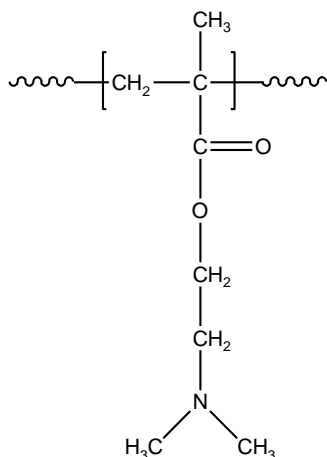


Sample Name:
Poly (N, N-dimethylaminoethyl methacrylate)

Sample # **P16051-DMAEMA**

Structure:



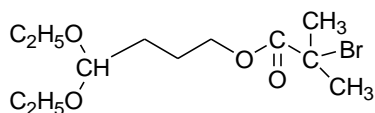
Composition:

$M_n \times 10^3$	PDI
52.0	1.32

Synthesis Procedure:

Poly (N, N-dimethylaminoethyl methacrylate) was synthesized by controlled radical polymerization.

ATRP reagent used for polymerization:



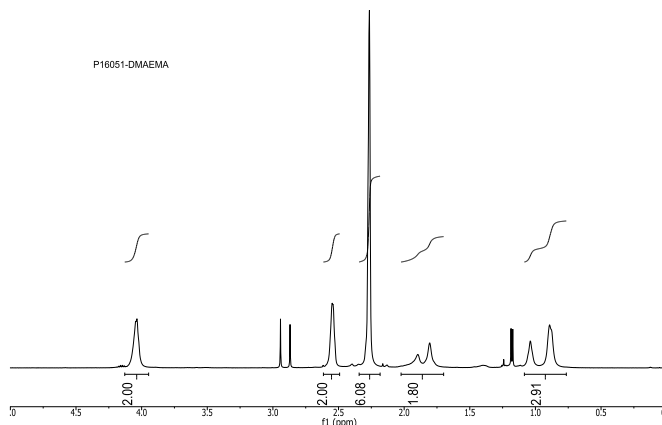
Characterization:

The molecular weight and polydispersity index (PDI) of Poly (N, N-dimethylaminoethyl methacrylate) were obtained by size exclusion chromatography (SEC).

Solubility:

Poly (N, N-dimethylaminoethyl methacrylate) is soluble in THF, chloroform, and DMF.

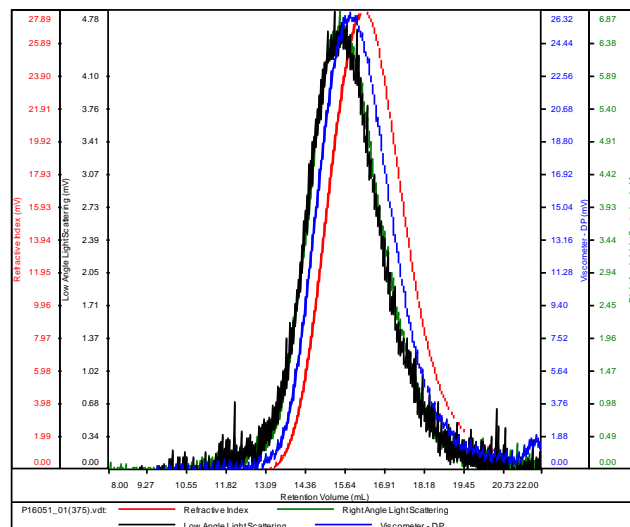
¹H NMR Spectrum of the homopolymer P16051:



SEC elugram of the polymer:

P16051

Conc (mg/mL)	6.1722
dn/dc (mL/g)	0.0800
Method	PS80k_December-2016-0004.vcm
Solvent	DMF w 0.023M LiBr
Column	PSS



Sample	M_n	M_w	M_p	M_w/M_n	IV
P16051_01(375).vdt	51,813	68,185	54,439	1.316	0.1336