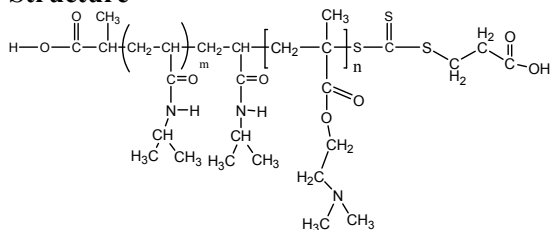


Sample Name:

Poly (N-isopropylacrylamide -b- NN-dimethylaminoethylmethacrylate)

Sample #: **P16035F4-NIPAMDMAEMA**

Structure



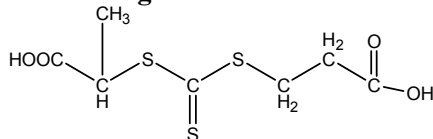
Composition:

Mn x 10 ³ PNIPAM-b-NNDMAEMA	PDI
1.5-b-35.5	1.80

Synthesis Procedure:

The polymer was synthesized by RAFT process.

RAFT reagent used:

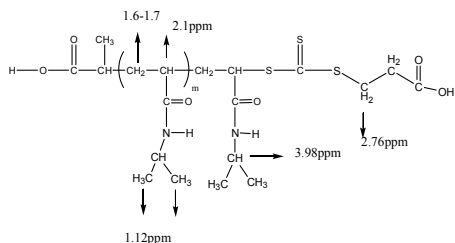
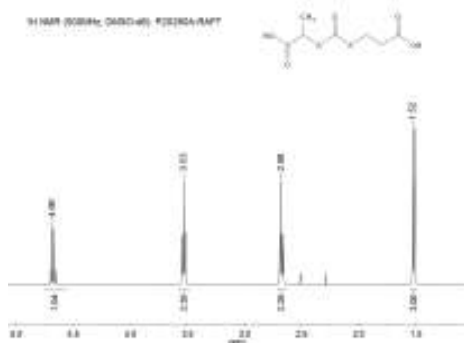


Characterization:

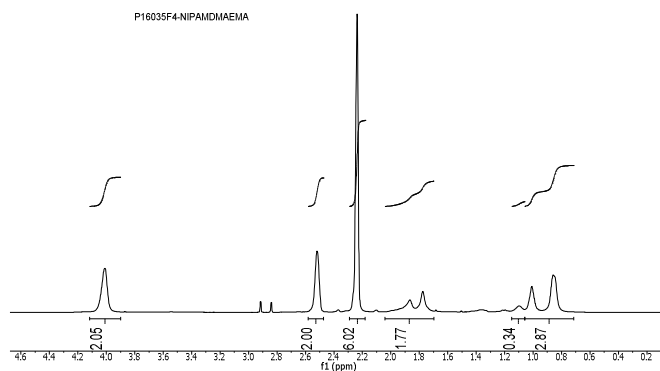
The polymer was characterized by SEC and ¹H NMR

Solubility: The polymer is soluble in THF, DMF, and Acetone.

¹H NMR spectrum of the RAFT reagent:



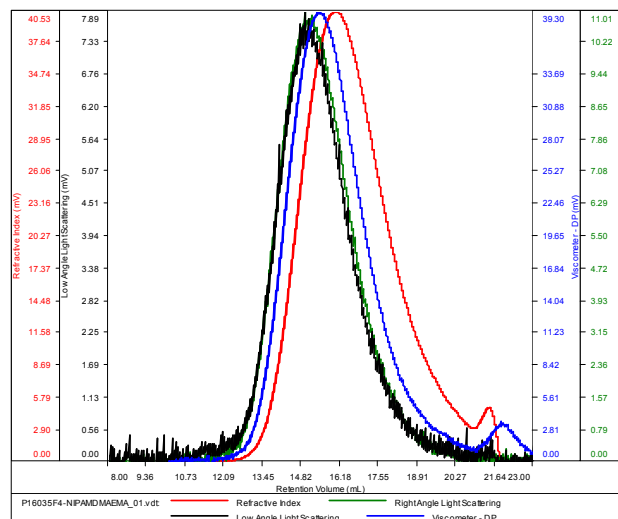
¹H NMR Spectrum of the block copolymer:



SEC elugram of the block copolymer:

P16035F4

Conc (mg/mL)	11.0779
dn/dc (mL/g)	0.0800
Method	PS80k_December-2016-0004.vcm
Solvent	DMF w 0.023M LiBr
Column	PSS



Sample	Mn	Mw	Mp	Mw/Mn	IV
P16035F4-NIPAMDMAEMA_01.vdt	36,946	66,639	61,710	1.804	0.1248