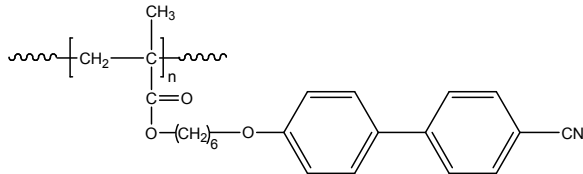


Sample Name:

Poly(6-(4'-cynaobiphenyl-4-yloxy)hexyl methacrylate)

Sample #: **P10884B-4CNBPHMA**

Structure:

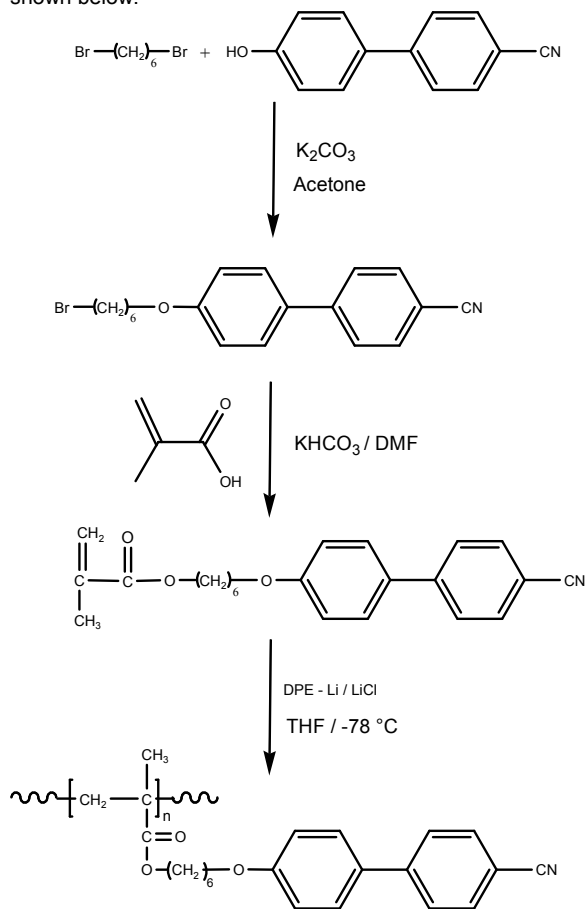


Composition:

Mn x 10 <sup>3</sup>	PDI
9.0	1.5

Synthesis Procedure:

Poly(6-(4'-cynaobiphenyl-4-yloxy)hexyl methacrylate) is obtained by living anionic polymerization of the monomer. The reaction scheme used for the polymer synthesis is shown below:



Characterization:

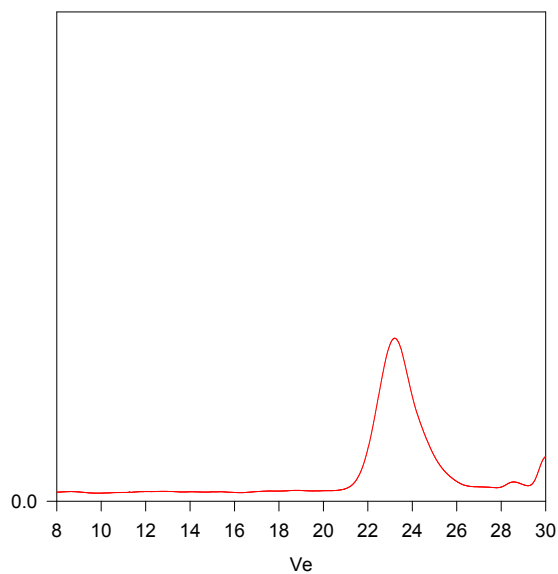
The molecular weight and polydispersity index (PDI) of Poly(6-(4'-cynaobiphenyl-4-yloxy)hexyl methacrylate) are obtained by size exclusion chromatography.

Solubility:

Poly(6-(4'-cynaobiphenyl-4-yloxy)hexyl methacrylate) is soluble in THF, acetone, dichloromethane and chloroform but insoluble in hexane, ethanol and water.

SEC of Homopolymer:

**P10884A-4CNBPHMA**



Size Exclusion Chromatography of:

Poly[6-[4-(4-cyanophenyl)phenoxy]hexyl methacrylate]

M<sub>w</sub> = 11,000 Mw: 16,000, M<sub>w</sub>/M<sub>n</sub> = 1.45