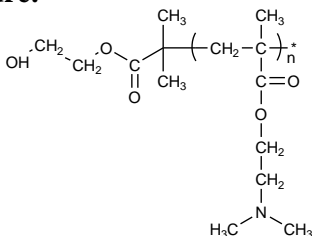


Sample Name:  
**Poly-(N, N-dimethylaminoethyl methacrylate)**

Sample #: **P16076-DMAEMA**

**Structure:**



**Composition:**

<b>Mn x 10<sup>3</sup></b>	<b>PDI</b>
12.0	1.15

**Synthesis:**

Poly (N, N-dimethylaminoethyl methacrylate) was synthesized by atom transfer radical polymerization.

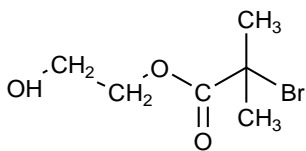
**Characterization:**

The molecular weight and polydispersity index (PDI) of Poly (N, N-dimethylaminoethyl methacrylate) were obtained by size exclusion chromatography (SEC).

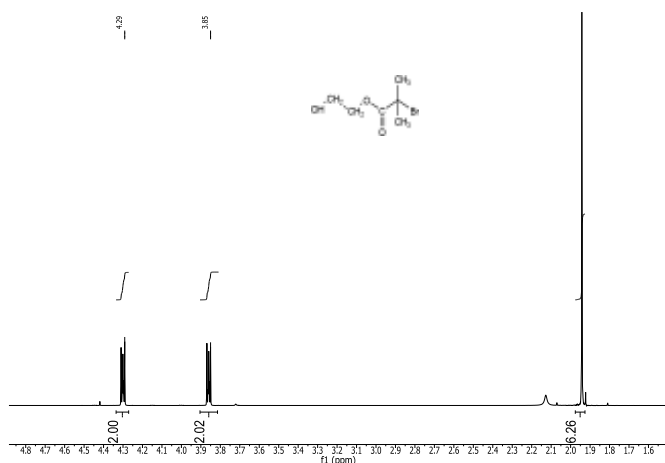
**Solubility:**

The polymer is soluble in THF, DMF, and Acetone.

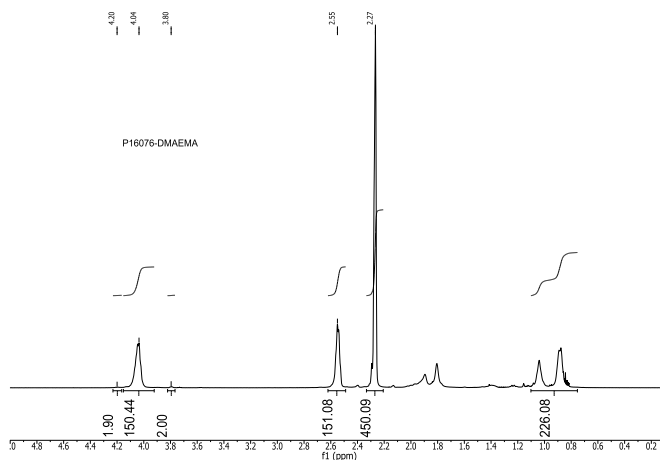
**ATRP reagent used for polymerization:**



**<sup>1</sup>H NMR spectrum of the ATRP reagent in CDCl<sub>3</sub>:**



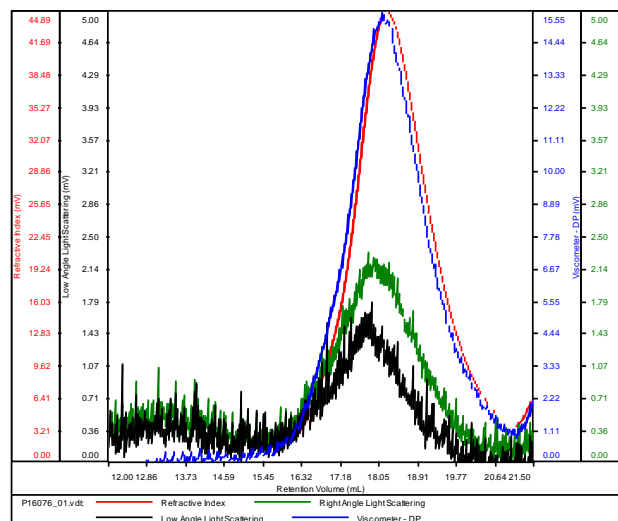
**<sup>1</sup>H NMR spectrum of the PDMAEMA in CDCl<sub>3</sub>:**



**SEC elugram of the polymer:**

**P16076-DMAEMA**

<b>Conc (mg/mL)</b>	6.6813
<b>dn/dc (mL/g)</b>	0.0870
<b>Method</b>	PS80k_December-2016-0004.vcm
<b>Solvent</b>	DMF w 0.023M LiBr
<b>Column</b>	PSS



<b>Sample</b>	<b>Mn</b>	<b>Mw</b>	<b>Mp</b>	<b>Mw/Mn</b>	<b>IV</b>
P16076_01.vdt	11,889	13,611	11,610	1.145	0.0545