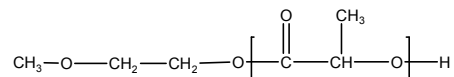


Sample Name: **Poly lactide**

Sample #: **P10890B-LA (DL-Form)**

Structure:

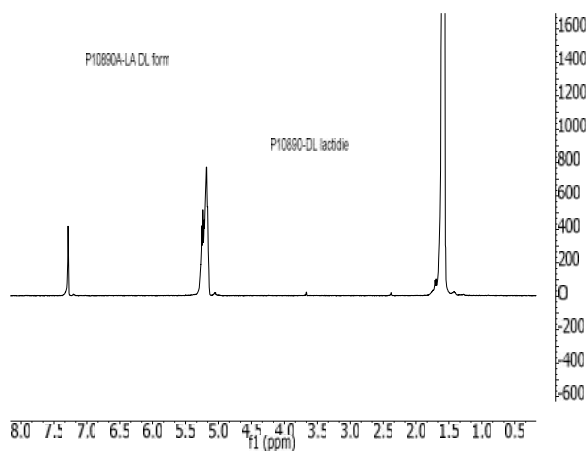
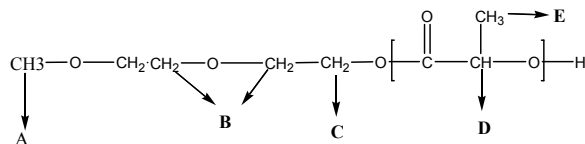


Composition:

Mn x 10 ³	PDI
122.0	1.9

Purification:

Unreacted monomer was removed by repeated precipitation from CHCl₃ solution to hexane.



Characterization:

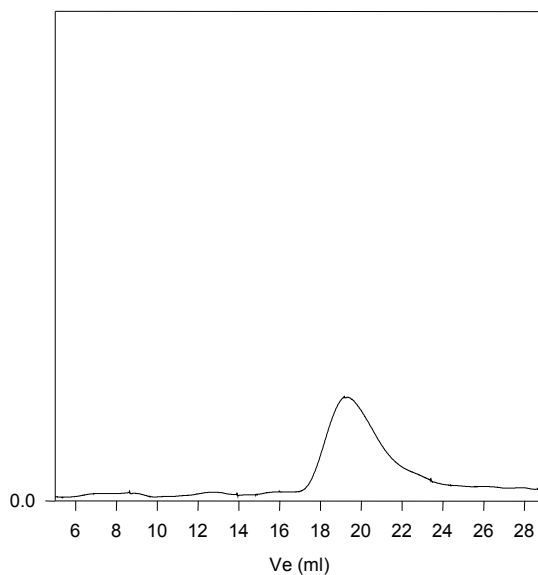
The molecular weight and polydispersity index (PDI) are obtained by size exclusion chromatography.

Solubility:

The polymer is soluble in toluene, THF, CHCl₃ and CH₂Cl₂. The polymer is insoluble in methanol, hexane and ether.

SEC of Homopolymer:

P10890B-LA



Size exclusion chromatography result:

— M_n=122,000 Mw=230,000 PI=1.9