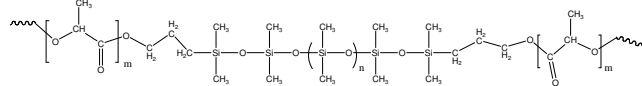


Sample Name: Poly(Lactide b-dimethylsiloxane-b-Lactide) Triblock Copolymer DL lactide

Sample #: P10898AA-LADMSLA

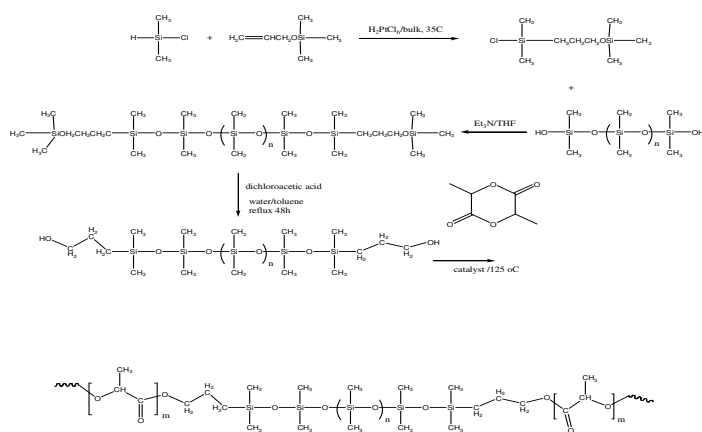
Structure:



Composition:

Mn x 10 ³	62.0-b-4.0-62.0
PDI	1.8
Tg (°C)	38

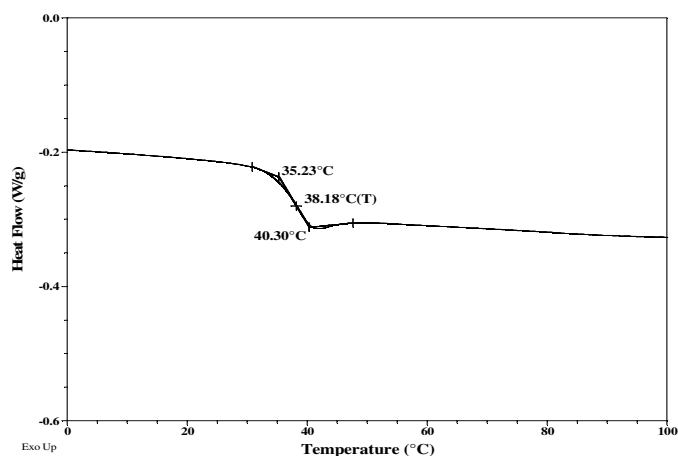
Synthesis Route:



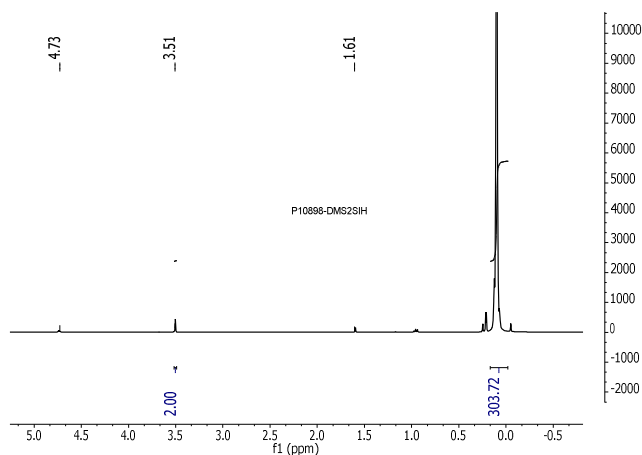
Characterization:

Central Block: Size exclusion chromatography (SEC): Varian liquid chromatograph equipped with UV and refractive detector. SEC columns from Supelco were used with THF as the eluent. The columns were calibrated with monodisperse poly(dimethyl siloxane). The molecular weights and the polydispersity indice were calculated.

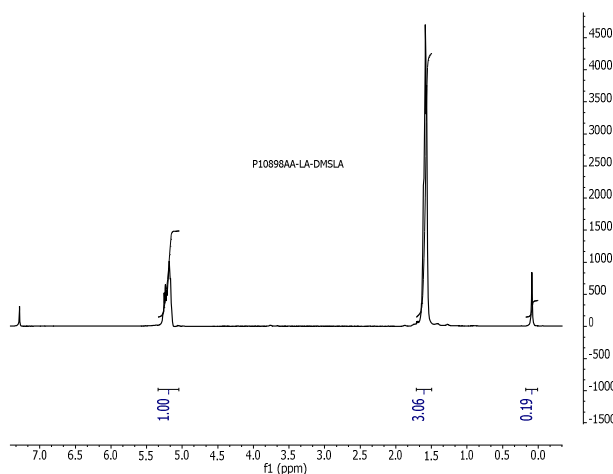
DSC thermogram of the polymer:



¹H NMR spectrum of disilane terminated PDMS:



¹H NMR spectrum of the polymer:



SEC elugram of the polymer:

P10898AA-LADMSLA

