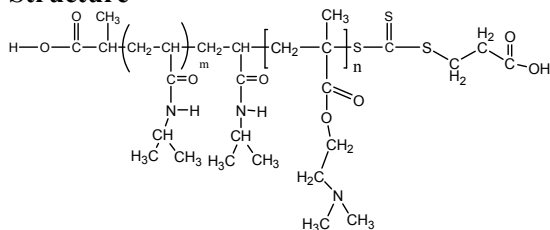


Sample Name:

Poly (N-isopropylacrylamide -b- NN-dimethylaminoethylmethacrylate)

Sample #: **P16057G-NIPAMDMAEMA**

Structure



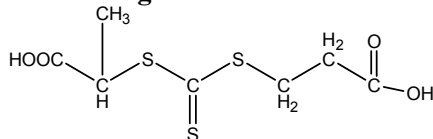
Composition:

Mn x 10 ³ PNIPAM-b-NNDMAEMA	PDI
2.0-b-25.0	1.4

Synthesis Procedure:

The polymer was synthesized by RAFT process.

RAFT reagent used:



Characterization:

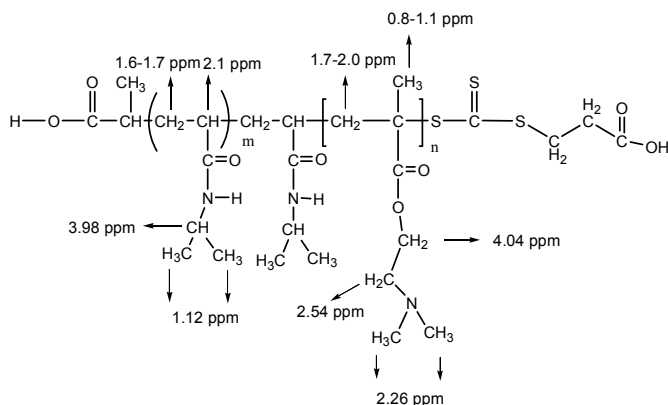
The polymer was characterized by SEC and ¹H NMR

Solubility: The polymer is soluble in THF, DMF, and Acetone.

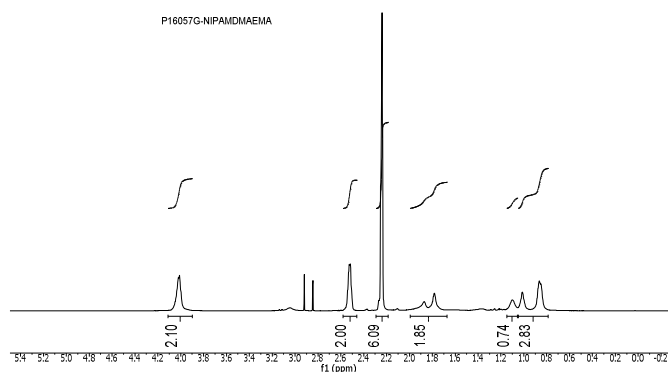
¹H NMR spectrum of the RAFT reagent:



Chemical shift of NIPAMDMAEMA copolymer



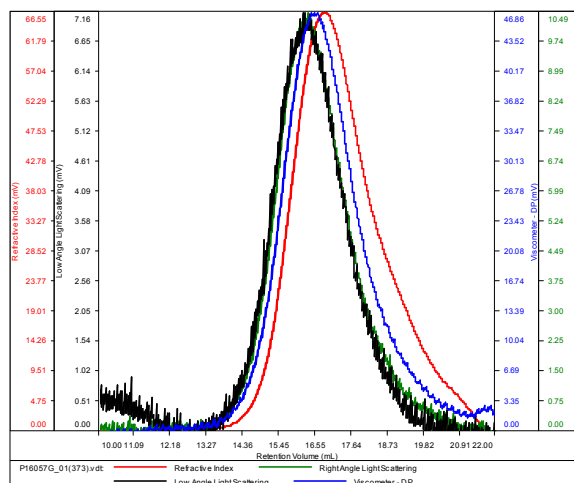
¹H NMR Spectrum of the block copolymer:



SEC elugram of the block copolymer:

P16057G

Conc (mg/mL)	15.1288
dn/dc (mL/g)	0.0600
Method	PS80k_December-2016-0004.vcm
Solvent	DMF w 0.023M LiBr
Column	PSS



Sample	Mn	Mw	Mp	Mw/Mn	IV
P16057G_01(373).vdt	27,127	38,916	37,866	1.435	0.0946