

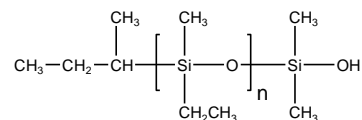
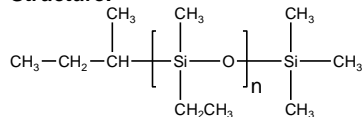
Sample Name: Poly(ethyl methyl siloxane)

SEC of Homopolymer:

P10921-EtMS

Sample #: P10921-EtMS

Structure:

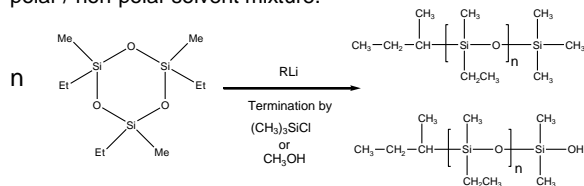


Composition:

Mn x 10 ³	Mw/Mn
48.0	1.6

Synthesis Procedure:

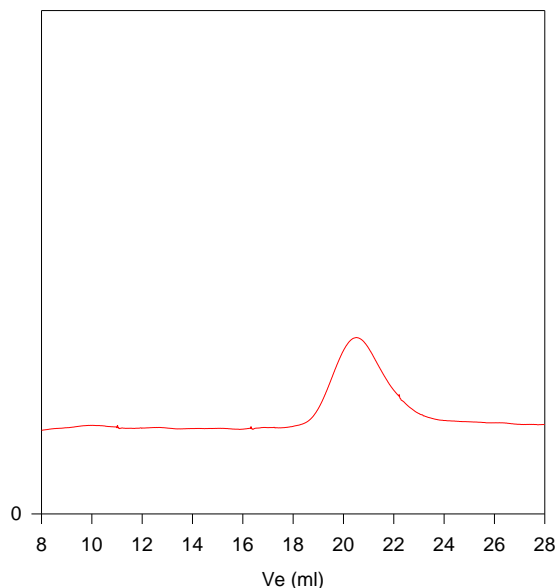
The polymerization of the cyclic trimer (1,3,5-trimethyl-1,3,5-triethyl cyclotrisiloxane-D3) (monomer synthesized) was initiated with a monofunctional lithium based initiator in a polar / non-polar solvent mixture.



Characterization:

The molecular weight and polydispersity index (PDI) are obtained by size exclusion chromatography (SEC) in THF. SEC analysis was performed on a Varian liquid chromatograph equipped with refractive and UV light scattering detectors. Three SEC columns from Supelco (G6000-4000-2000 HXL) were used with triple detectors from Viscotek Co. SEC instrument was calibrated with monodispersed poly dimethylsiloxane polymers.

Solubility: Soluble in Hexane, toluene, benzene, THF, CHCl₃.



Size Exclusion Chromatography of Poly(ethylmethyl siloxane)

M_n=48,000, M_w=76,500, PI=1.6

