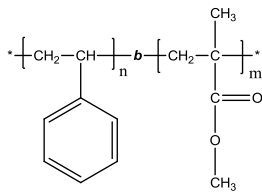


Sample Name: Poly (styrene-b-methyl methacrylate)
(PMMA block is predominantly syndiotactic, >78%)

Sample #: P40643A-SMMA

Structure:



Composition:

$M_n \times 10^3$ S-b-MMA	PDI
57.5-b-212.0	1.19

T_g for PS block:	103°C
T_g for PMMA block:	103°C

Synthesis procedure:

The polymer was synthesized by anionic polymerization.

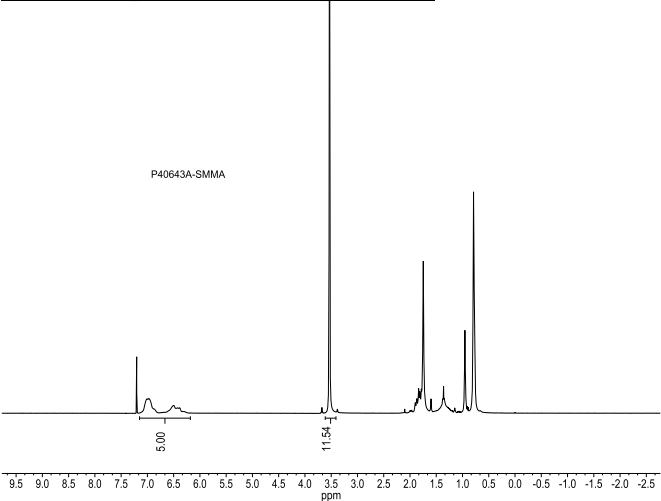
Characterization:

The molecular weight and polydispersity index of the polymer were determined by size exclusion chromatography (SEC). The ratio between blocks was calculated from ^1H NMR spectrum.

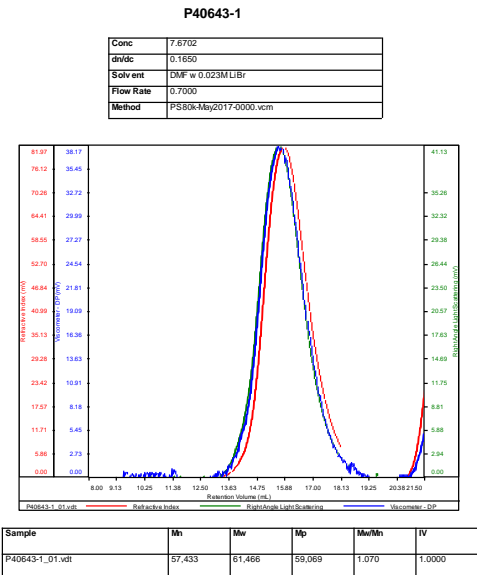
Solubility:

Poly(styrene-b-methyl methacrylate) is soluble in THF, toluene, dioxane, chloroform; and it precipitates from methanol, ethanol, hexanes, water.

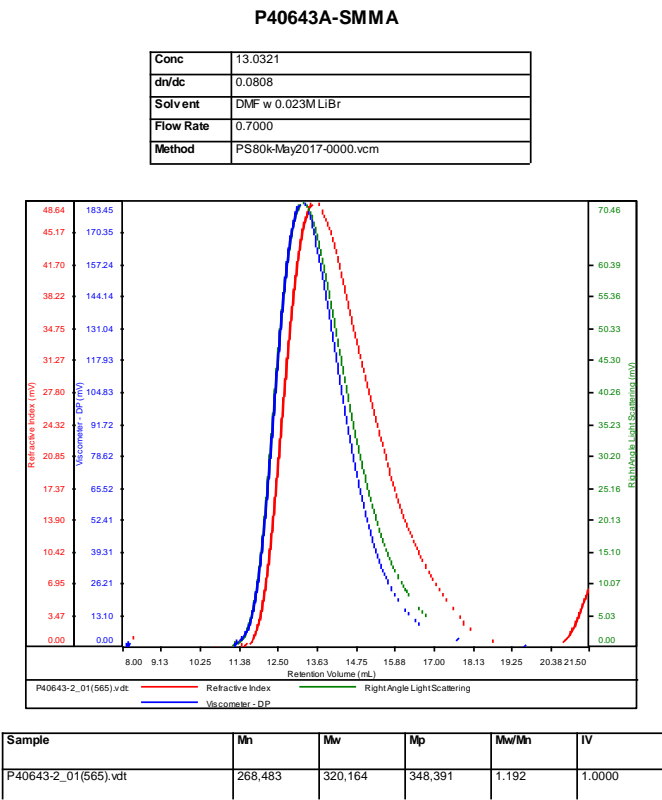
^1H NMR spectrum of the polymer:



SEC elugram of the Styrene block:



SEC elugram of the polymer:



References:

1. S. K. Varshney, R. Fayt, Ph. Teyssie, and J.P. Hautekeer US Patent 5,264,527 (1993)
2. Ph. Teyssie, Ph. Bayard, R. Jerome, S. K. Varshney, and J. S. Wang, 35th IUPAC International Union of Pure & Applied Chemistry International Symposium on Macromolecules 1994, 67.