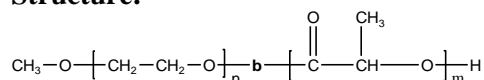


Sample Name:

Poly(ethylene oxide -b- lactide) (L form)

Sample #: **P40676C-EOLA (L form)**

Structure:



Composition:

Mn x 10 ³ PEO-b-PLA	PDI
5.0-b-7.0	1.12

Synthesis Procedure:

Poly(ethylene oxide -b- lactide) is prepared by living anionic polymerization of ethylene oxide and coordination polymerization of lactide.

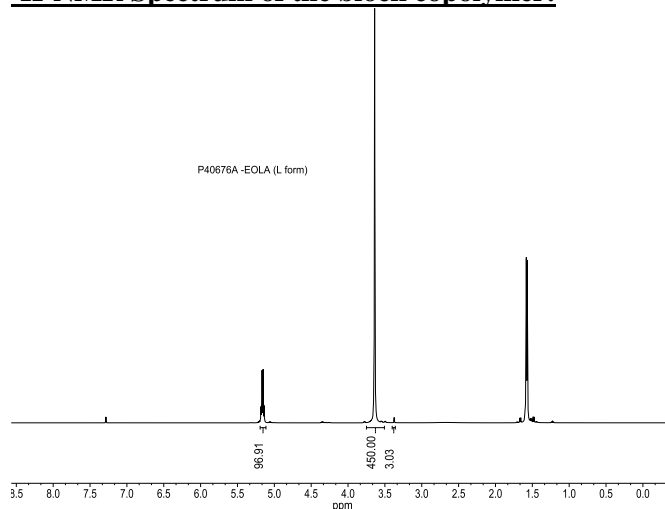
Characterization:

An aliquot of the anionic poly(ethylene oxide) block was terminated before addition of lactide and analyzed by size exclusion chromatography (SEC) to obtain the molecular weight and polydispersity index (PDI). The final block copolymer composition was calculated from ¹H-NMR spectroscopy by comparing the peak area of the methoxyl protons of poly(ethylene oxide) at about a 3.6 ppm with the lactide protons at about 5.1 and 1.55 ppm.

Solubility:

Poly(ethylene oxide -b- lactide) is soluble in chloroform, THF, DMF, toluene and precipitates from ethanol, ether and hexane.

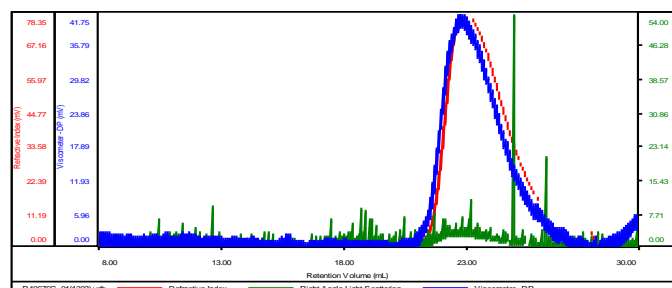
¹H-NMR Spectrum of the block copolymer:



SEC of the block copolymer:

P40676A-EOLA(L form)

Concentration (mg/mL)	3.5747
Sample dn/dc (mL/g)	0.0350
Method File	PS80K-June272017-0000.vcm
Column Set	3x PL 1113-6300
Solvent	THF



Sample	Mn (Da)	Mw (Da)	Mw/Mn	IV (dL/g)	Mp (Da)
P40676C_01(1393).vdt	11,918	13,363	1.121	0.7202	12,393

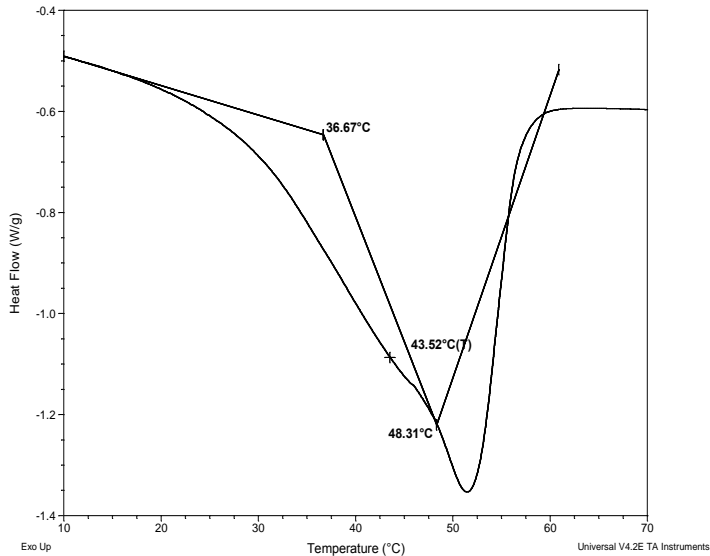
Thermal analysis of the sample# P40676C-EOLA

Thermal analysis of the samples was carried out on a TA Q100 differential scanning calorimeter at a heating rate of 20°C/min. The midpoint of the slope change of the heat flow plot of the second heating scan was considered as the glass transition temperature (T_g).

Thermal analysis results at a glance

For PLA block		
T_g : 44°C	T_m : 141°C	T_c : 95°C
For PEO block		
T_g : Not distinct	T_m : Not observed	T_c : 33°C

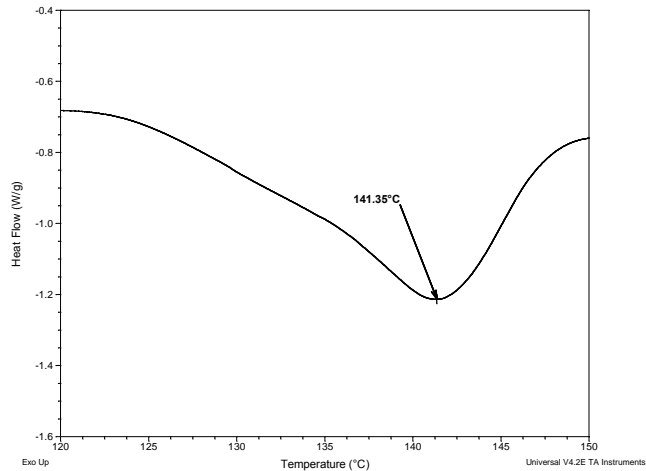
Thermogram for PLA block:



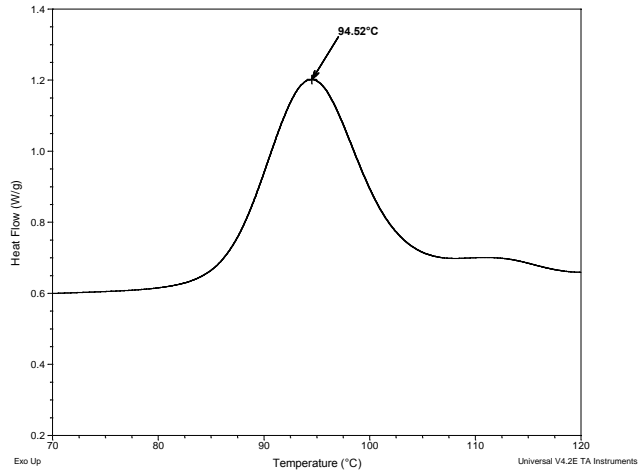
Melting and crystallization curve for the sample

The melting temperature (T_m) was taken as the maximum of the endothermic peak whereas the crystallization temperature (T_c) was considered as the minimum of the exothermic peak.

Melting curve for PLA block



Crystallization curve For PLA block



Crystallization curve For PEO block

