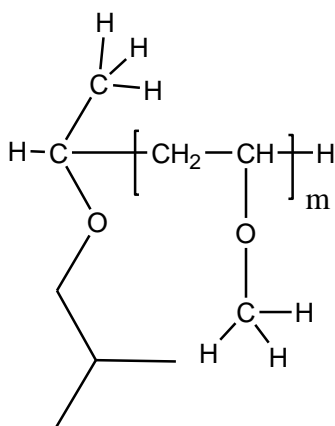


Sample Name: Poly (methyl vinyl ether)

Sample #: P40695-MVE

**Structure:**



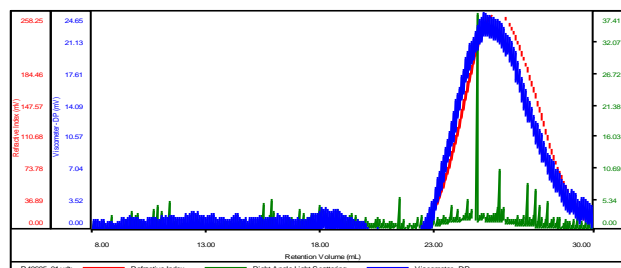
**Composition:**

| $M_n \times 10^3$ | PDI  |
|-------------------|------|
| 0.8               | 1.27 |

SEC elugram of the homopolymer:

P40695-MVE

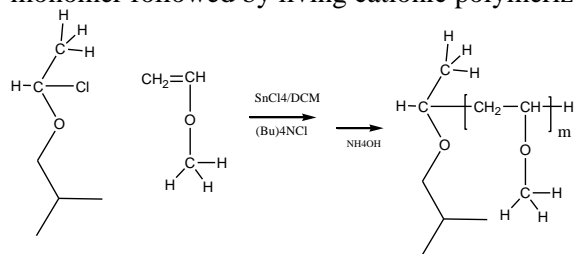
|                       |                           |
|-----------------------|---------------------------|
| Concentration (mg/mL) | 5.2807                    |
| Sample dn/dc (mL/g)   | 0.1100                    |
| Method File           | PS80K-June272017-0000.vcm |
| Column Set            | 3x PL 1113-6300           |
| Solvent               | THF                       |



| Sample        | $M_n$ (Da) | $M_w$ (Da) | $M_w/M_n$ | IV (dL/g) | $M_p$ (Da) |
|---------------|------------|------------|-----------|-----------|------------|
| P40695_01.vdt | 782        | 997        | 1.276     | 0.4146    | 669        |

**Synthesis Procedure:**

Poly (methyl vinyl ether) is obtained by synthesis of the monomer followed by living cationic polymerization.



**Characterization:**

The product was characterized by size exclusion chromatography (SEC) and  $^1\text{H}$  NMR.

**$^1\text{H}$  NMR of the Polymer:**

