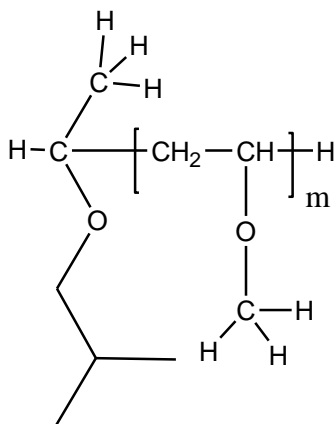


Sample Name: Poly (methyl vinyl ether)

Sample #: P16245A-MVE

**Structure:**

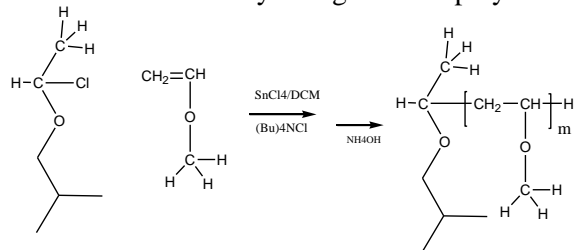


**Composition:**

$M_n \times 10^3$	PDI
4.0	1.5

**Synthesis Procedure:**

Poly(methyl vinyl ether) is obtained by synthesis of the monomer followed by living cationic polymerization.



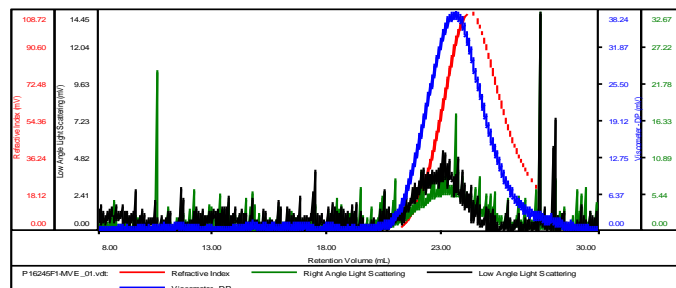
**Characterization:**

The product was characterized by size exclusion chromatography (SEC) and  $^1\text{H}$  NMR.

**SEC elugram of the homopolymer:**

**P16245-A-MVE**

Concentration (mg/mL)	18.7791
Sample dn/dc (mL/g)	0.1100
Method File	PS80K-august2017-0000.vcm
Column Set	3x PL 1113-6300
Solvent	THF



Sample	$M_n$ (Da)	$M_w$ (Da)	$M_w/M_n$	IV (dL/g)	$M_p$ (Da)
P16245F1-MVE_01.vdt	4,137	6,485	1.567	0.1500	4,353