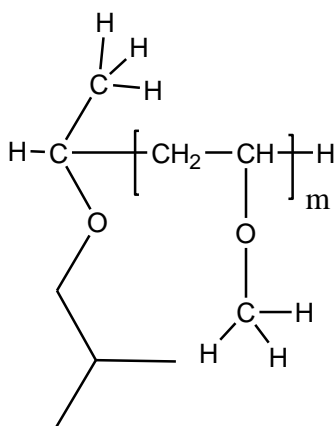


Sample Name: Poly(methyl vinyl ether)

Sample #: P16245E-MVE

**Structure:**



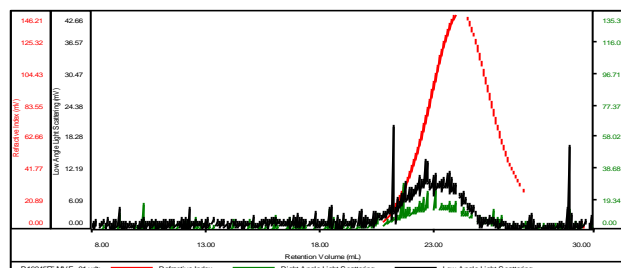
**Composition:**

$M_n \times 10^3$	PDI
6.0	1.8

**SEC elugram of the homopolymer:**

**P16245E-MVE**

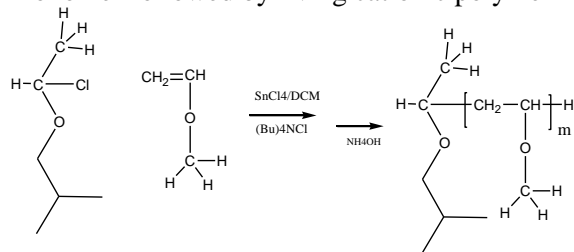
Concentration (mg/mL)	29.4417
Sample dn/dc (mL/g)	0.1100
Method File	PS80K-august2017-0000.vcm
Column Set	3x PL 1113-6300
Solvent	THF



Sample	$M_n$ (Da)	$M_w$ (Da)	$M_w/M_n$	IV (dL/g)	$M_p$ (Da)
P16245F5-MVE_01.vdt	5,814	10,760	1.851	0.1769	8,956

**Synthesis Procedure:**

Poly(methyl vinyl ether) is obtained by synthesis of the monomer followed by living cationic polymerization.



**Characterization:**

The product was characterized by size exclusion chromatography (SEC).