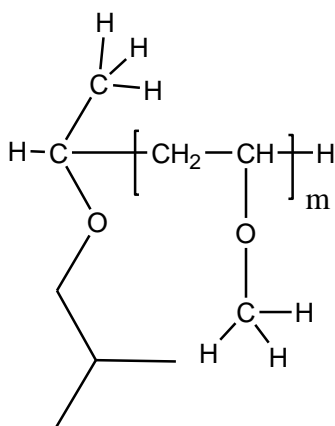


Sample Name: Poly(methyl vinyl ether)

Sample #: P16245H-MVE

Structure:



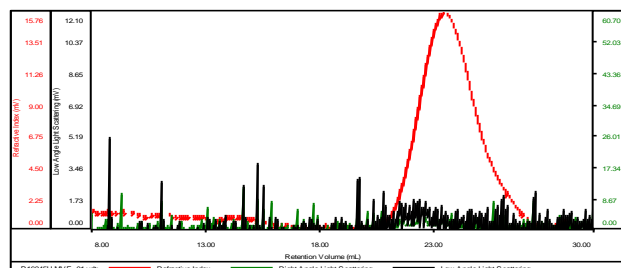
Composition:

$M_n \times 10^3$	PDI
11.5	1.5

SEC elugram of the homopolymer:

P16245H-MVE

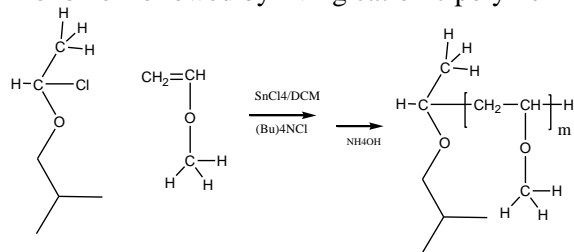
Concentration (mg/mL)	2.7554
Sample dn/dc (mL/g)	0.1100
Method File	PS80K-august2017-0000.vcm
Column Set	3x PL 1113-6300
Solvent	THF



Sample	M_n (Da)	M_w (Da)	M_w/M_n	IV (dL/g)	M_p (Da)
P16245H-MVE_01.vdt	11,634	17,770	1.527	1.0000	8,576

Synthesis Procedure:

Poly(methyl vinyl ether) is obtained by synthesis of the monomer followed by living cationic polymerization.



Characterization:

The product was characterized by size exclusion chromatography (SEC).