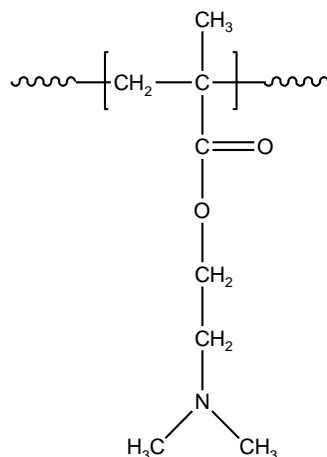


Sample Name:

Poly (N, N-dimethylaminoethyl methacrylate)

Sample # **P16050-DMAEMA**

Structure:



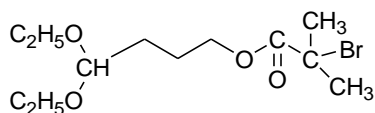
Composition:

$M_n \times 10^3$	PDI
33.0	1.55

Synthesis Procedure:

Poly (N, N-dimethylaminoethyl methacrylate) was synthesized by controlled radical polymerization.

ATRP reagent used for polymerization:



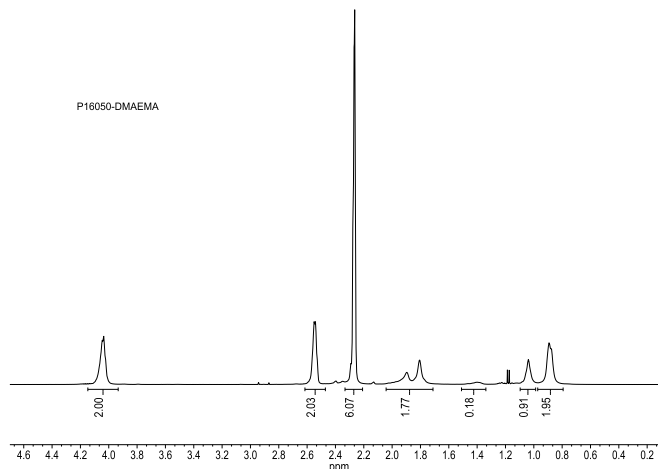
Characterization:

The molecular weight and polydispersity index (PDI) of Poly (N, N-dimethylaminoethyl methacrylate) were obtained by size exclusion chromatography (SEC).

Solubility:

Poly (N, N-dimethylaminoethyl methacrylate) is soluble in THF, chloroform, and DMF.

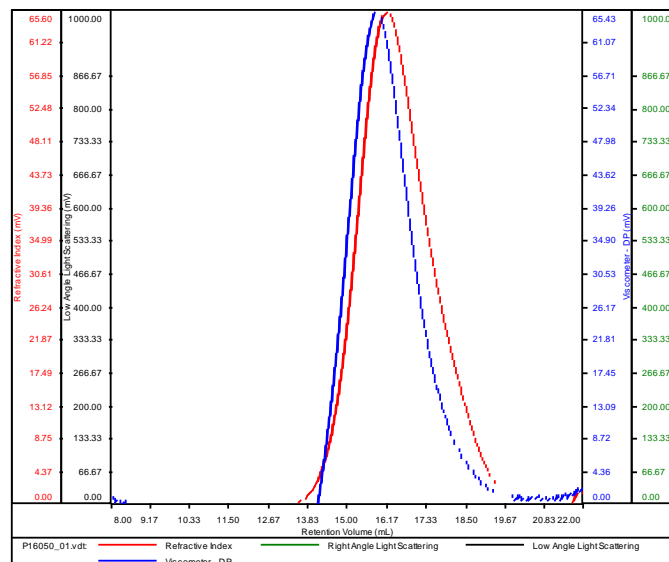
¹H NMR Spectrum of the homopolymer:



SEC elugram of the polymer:

P16050-DMAEMA

Conc (mg/mL)	7.1348
dn/dc (mL/g)	0.0870
Method	PS80k-May-25-2016-0000.vcm
Solvent	DMF w 0.023M LiBr
Column	PSS



Sample	Mn	Mw	Mp	Mw/Mn	IV
P16050_01.vdt	32,658	51,108	47,462	1.565	0.2223