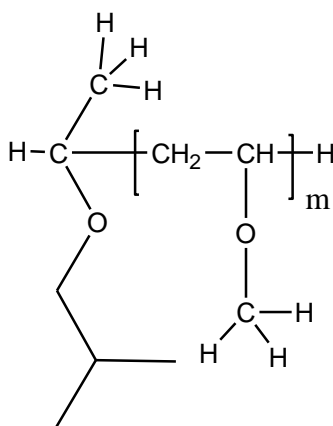


Sample Name: Poly(methyl vinyl ether)

Sample #: P16254E-MVE

Structure:

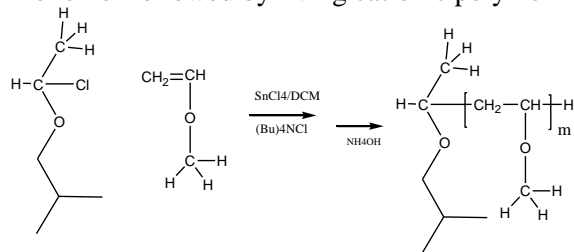


Composition:

$M_n \times 10^3$	PDI
16.0	1.35

Synthesis Procedure:

Poly(methyl vinyl ether) is obtained by synthesis of the monomer followed by living cationic polymerization.



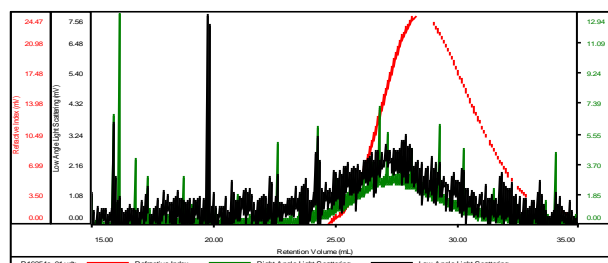
Characterization:

The product was characterized by size exclusion chromatography (SEC).

SEC elugram of the homopolymer:

P16254E-MVE

Concentration (mg/mL)	10.2452
Sample dn/dc (mL/g)	0.0670
Method File	PS80K-august2017-0001.vcm
Column Set	3x PL 1113-6300
Solvent	THF



Sample	Mn (Da)	Mw (Da)	Mw/Mn	IV (dL/g)	Mp (Da)
P16254e_01.vdt	15,803	21,475	1.359	0.1170	17,071