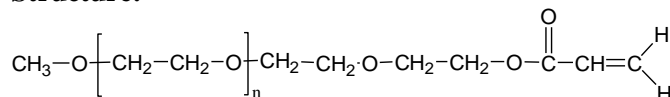


**Sample Name:**  $\alpha$ -Methoxy- $\omega$ -acrylate-end functionalized poly (ethylene glycol); or Poly (ethylene glycol) methyl ether acrylate

**Sample #:** P16150A-mPEGacrylate

**Structure:**



**Composition:**

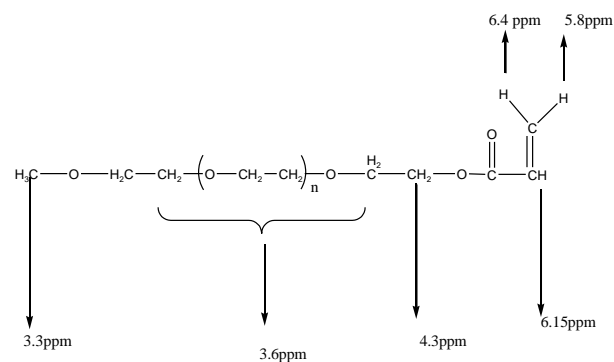
$M_n \times 10^3$	PDI	Functionality (Acrylate)
5.5	1.08	> 98%

**Characterization:**

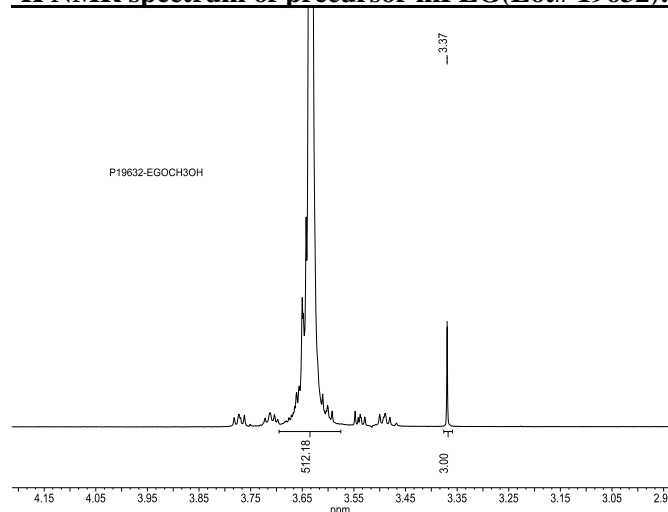
The polymer was characterized by SEC and  $^1\text{H}$  NMR.

**Solubility:**

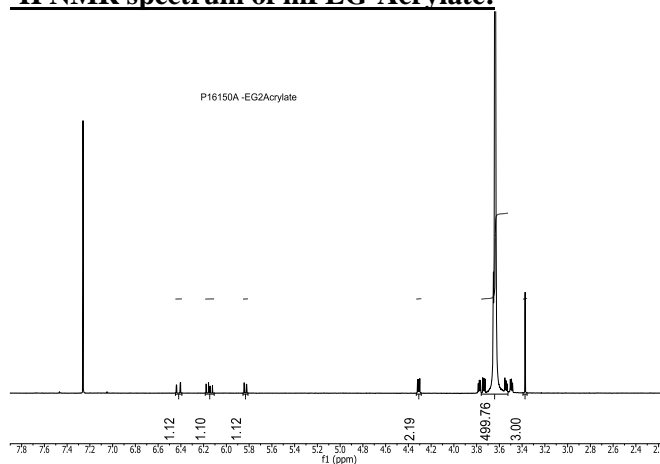
The Polymer is soluble in water, methanol, ethanol, THF,  $\text{CHCl}_3$ . It precipitates from cold ethanol, isopropanol, hexane, ether.



**$^1\text{H}$  NMR spectrum of precursor mPEG(Lot# 19632):**

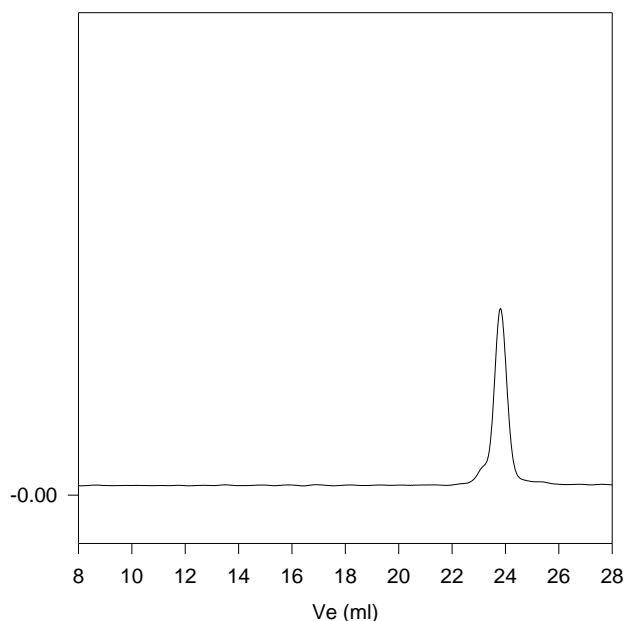


**$^1\text{H}$  NMR spectrum of mPEG-Acrylate:**



**SEC elugram of mPEG polymer before converting terminal -OH group to acrylate group:**

**P19632-EGOCH3OH**



Size Exclusion Chromatography of Polyethylene glycol methyl ether  
 $M_n=5,500$ ,  $M_w=6,000$ ,  $PI=1.08$