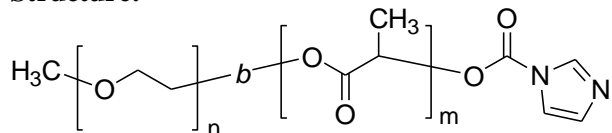


Sample Name:
Imidazole end functionalized Poly (ethylene oxide - b- lactide) (DL form)

Sample #: P40728A-mPEGLA-IM (DL form)

Structure:

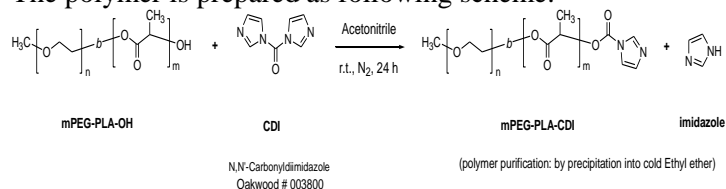


Composition:

Mn x 10 ³ PEO-b-PLA	PDI
2.0-b-2.0	1.13

Synthesis Procedure:

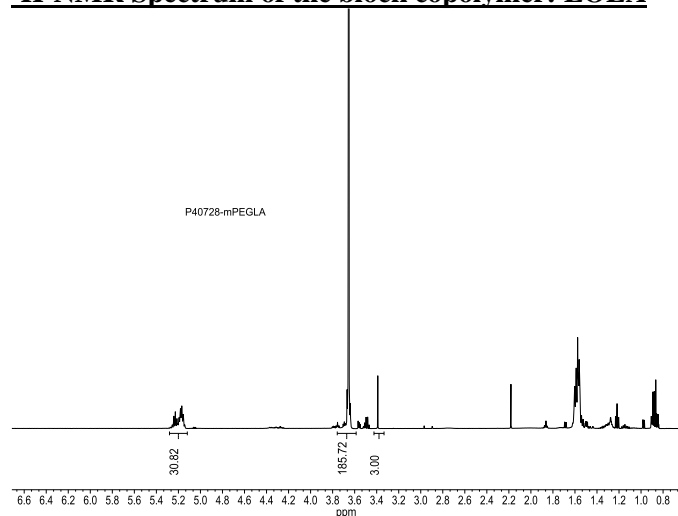
The polymer is prepared as following scheme:



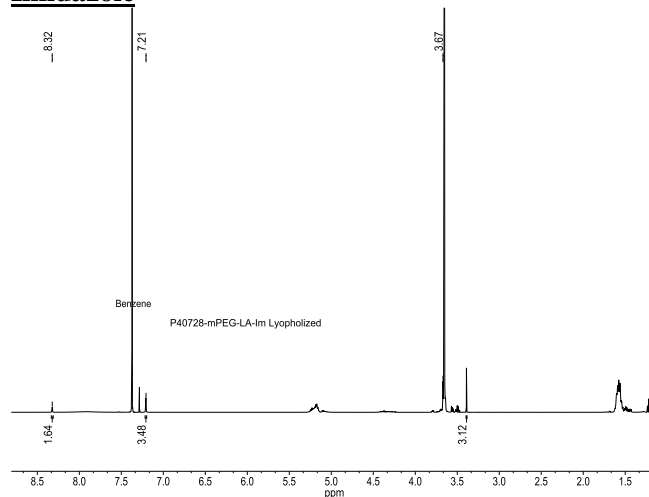
Characterization:

The product was characterized by size exclusion chromatography (SEC), and ¹H NMR.

¹H-NMR Spectrum of the block copolymer: EOLA

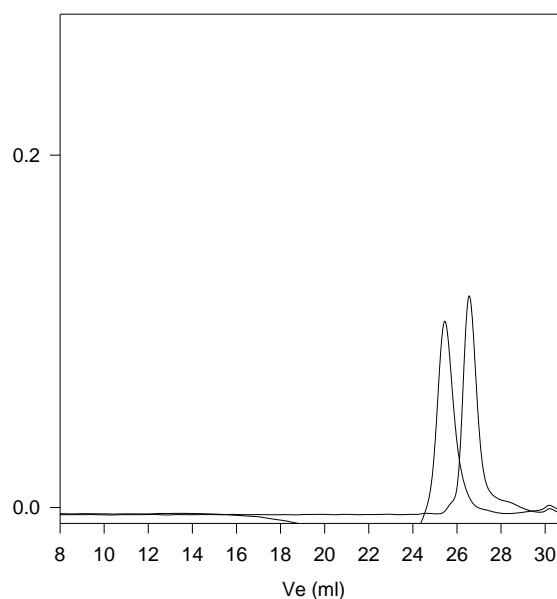


¹H-NMR Spectrum of the block copolymer EOLA-Imidazole



SEC of the block copolymer:

P40728- EOLA (DL form)



Size exclusion chromatography:

- Poly(ethylene glycol), M_n=2000, M_w=2100, PI=1.06
 - Block Copolymer PEO(2000)-b-PLA(2000), PI=1.13
- Composition from ¹H NMR
 Dp: EO(45 units)-b-LA (35 units)