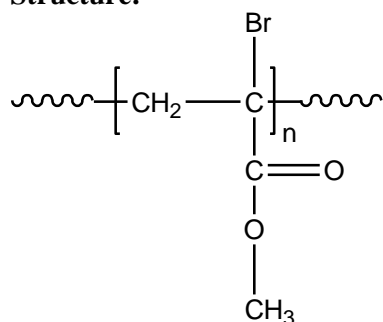


Sample Name: Poly( $\alpha$ -bromo-methyl acrylate)

Sample #: P14415-BrMA

**Structure:**

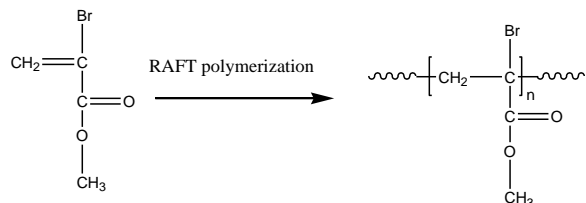


**Composition:**

Mn x 10 <sup>3</sup>	PDI
168.0	1.8

**Synthesis Procedure:**

Polymer is prepared by RAFT polymerization process. The reaction scheme used for the polymer synthesis is shown as below:



**Characterization:**

The molecular weight and polydispersity index (PDI) are obtained by size exclusion chromatography.

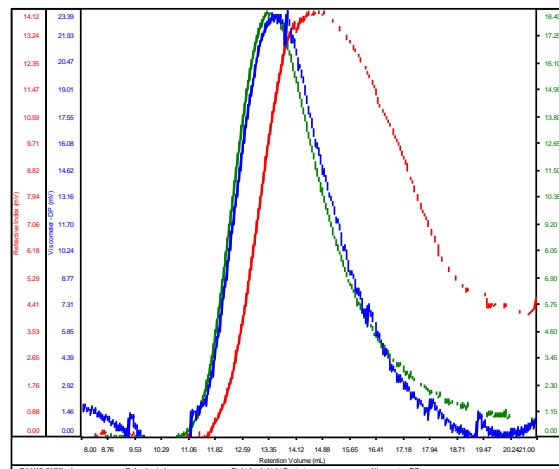
**Solubility:**

Poly( $\alpha$ -bromo-methyl acrylate) is soluble in THF, CHCl<sub>3</sub>, 1,4-dioxane, toluene. It is precipitated out from cold ethanol, methanol.

**SEC elugram of the polymer:**

P14415-BrMA

Conc	4.8261
dn/dc	0.0650
Solvent	DMF w 0.023M LiBr
Flow Rate	0.7000
Method	PS80k_2017-11-07-0000.vcm



Sample	Mn	Mw	Mp	Mw/Mn	IV
P14415_01(62).vdt	168,064	297,412	250,640	1.770	33.3549