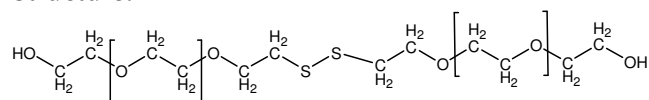


Sample Name:

Poly(ethylene glycol) with disulfide linkage

Sample #: **P19037-EG-disulfide**

Structure:



Composition:

Mn x 10 ³	PDI
34.0	1.13

Synthesis Procedure:

Poly(ethylene glycol) with dithiol linkage was obtained by the anionic polymerization using potassium salt of **2,2'-Dithiodiethanol**

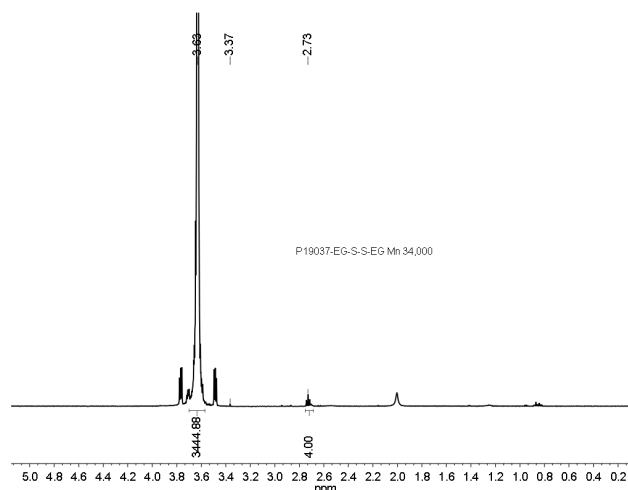
Characterization:

The molecular weight and polydispersity index of this polymer were determined by size exclusion chromatography (SEC) using a Varian liquid chromatograph equipped with a UV and refractive index detector. Polymer functionality was verified by oxidation of the thiol to disulfide.

Solubility:

Polymer is soluble in water, methanol and ethanol, THF, CHCl₃. It is precipitated out from cold ethanol, isopropanol, hexane and ether.

HNMR of the product:



SEC of Sample:

Sample ID: P19037 EOS-S-EC

Concentration (mg/mL)	1.9133
Sampled conc (mL/g)	0.0860
Method File	PS80<Dec17-2014 0000.vcm
Column Set	3x PL 1113-6300
Solvent	THF

