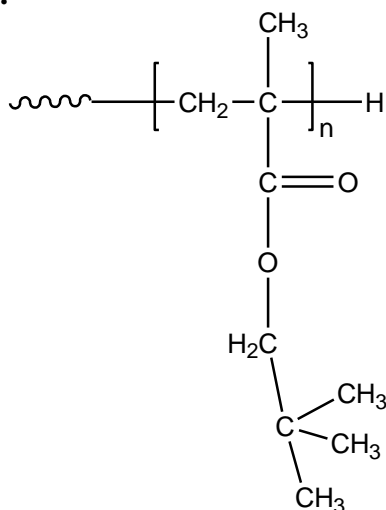


Sample Name: Poly (neopentyl methacrylate)

Sample #: P40839-NPMA

Structure:



Composition:

$M_n \times 10^3$ (g/mol)	M_w/M_n
40.0	2.6

Synthesis procedure:

The polymer was synthesized by anionic polymerization process.

Characterization:

The molecular weight and polydispersity index (M_w/M_n) of poly (neopentyl methacrylate) were obtained by size exclusion chromatography (SEC).

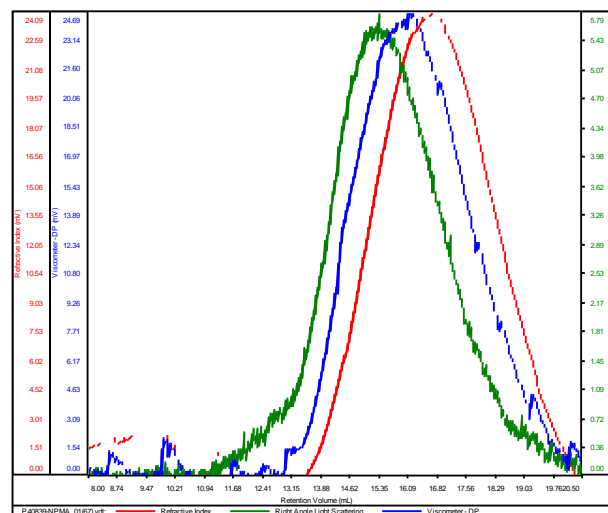
Solubility:

Poly (neopentyl methacrylate) is soluble in THF, chloroform, toluene, and dioxane. The polymer precipitates from hexanes, methanol, and ethanol.

SEC elugram of the homopolymer:

P40839-NPMA

Conc	5.4582
dn/dc	0.0650
Solvent	DMF w 0.023M LiBr
Flow Rate	0.7000
Method	PS80know302017-0000.vcm



Sample	M_n	M_w	M_p	M_w/M_n	IV
P40839-NPMA_01(67).vdt	39,914	104,915	56,719	2.628	35.7615