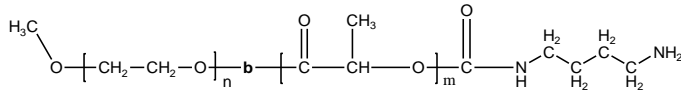


Sample Name:

Amino end functionalized Poly (ethylene oxide -b- lactide) (DL form)

Sample #: **P40845-mPEGLA-NH2**

Structure:

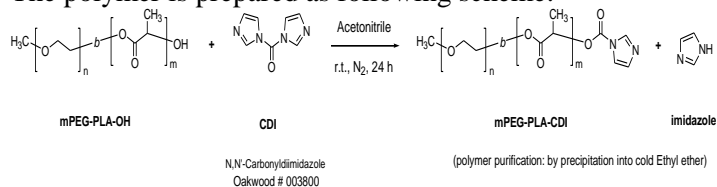


Composition:

Mn x 10 ³ PEO-b-PLA	PDI
2.0-b-1.6	1.13

Synthesis Procedure:

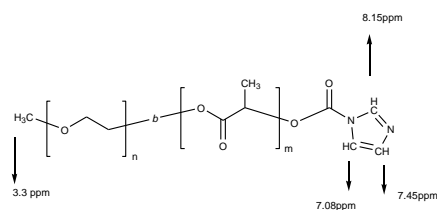
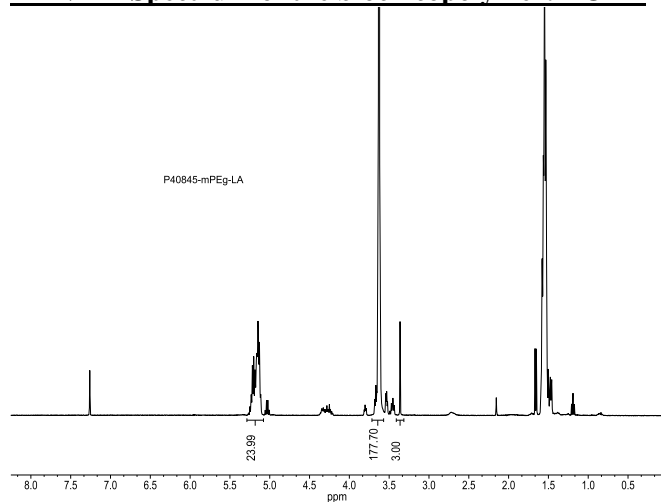
The polymer is prepared as following scheme:



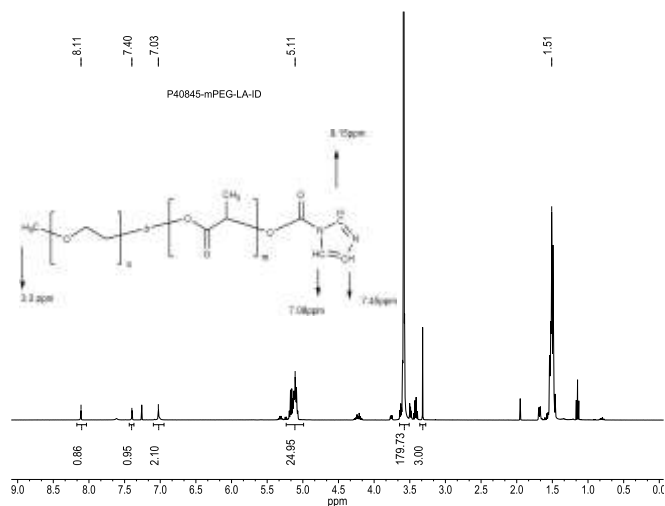
Characterization:

The product was characterized by size exclusion chromatography (SEC), and ¹H NMR.

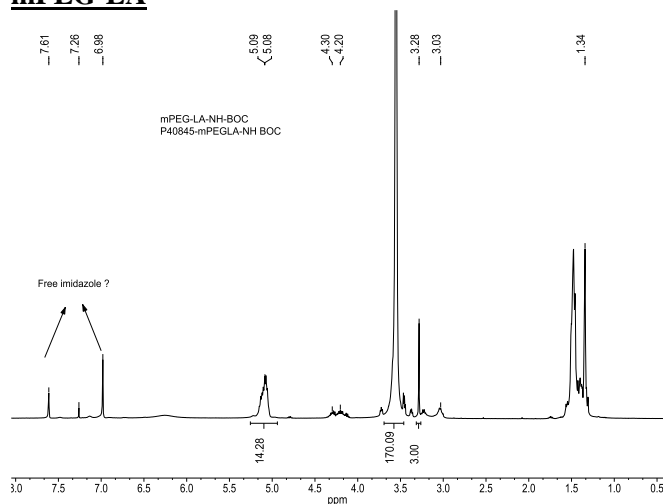
¹H-NMR Spectrum of the block copolymer: EOLA



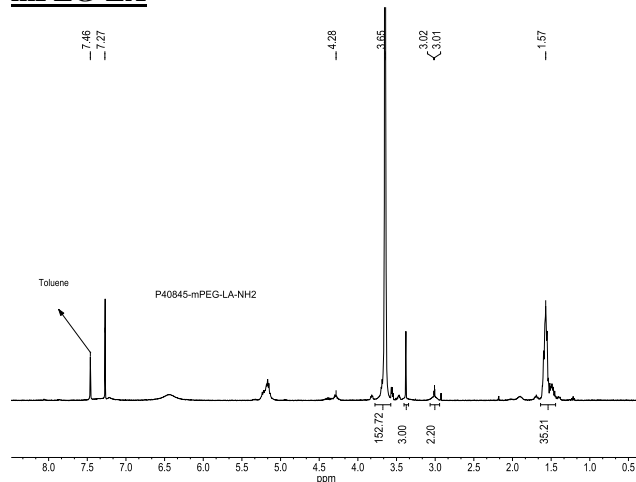
¹H-NMR Spectrum of the block copolymer EOLA-Imidazole



¹H-NMR spectrum of BOC end functionalized mPEG-LA

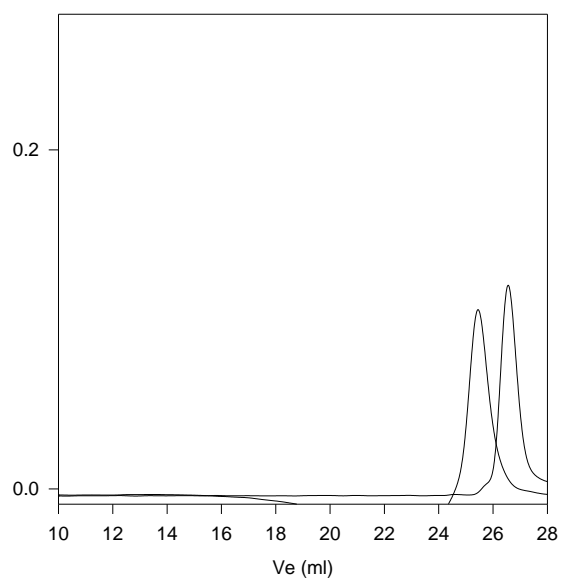


¹H-NMR spectrum of amino end functionalized mPEG-LA



SEC of the block copolymer:

P40845- mPEG-LA-NH2 (DL form)



Size exclusion chromatography:

- Poly(ethylene glycol), $M_n=2000$, $M_w=2100$, $PI=1.06$
- Block Copolymer PEO(2000)-b-PLA(1600), $PI=1.13$
Composition from 1H NMR
Dp: EO(45 units)-b-LA (22 units)